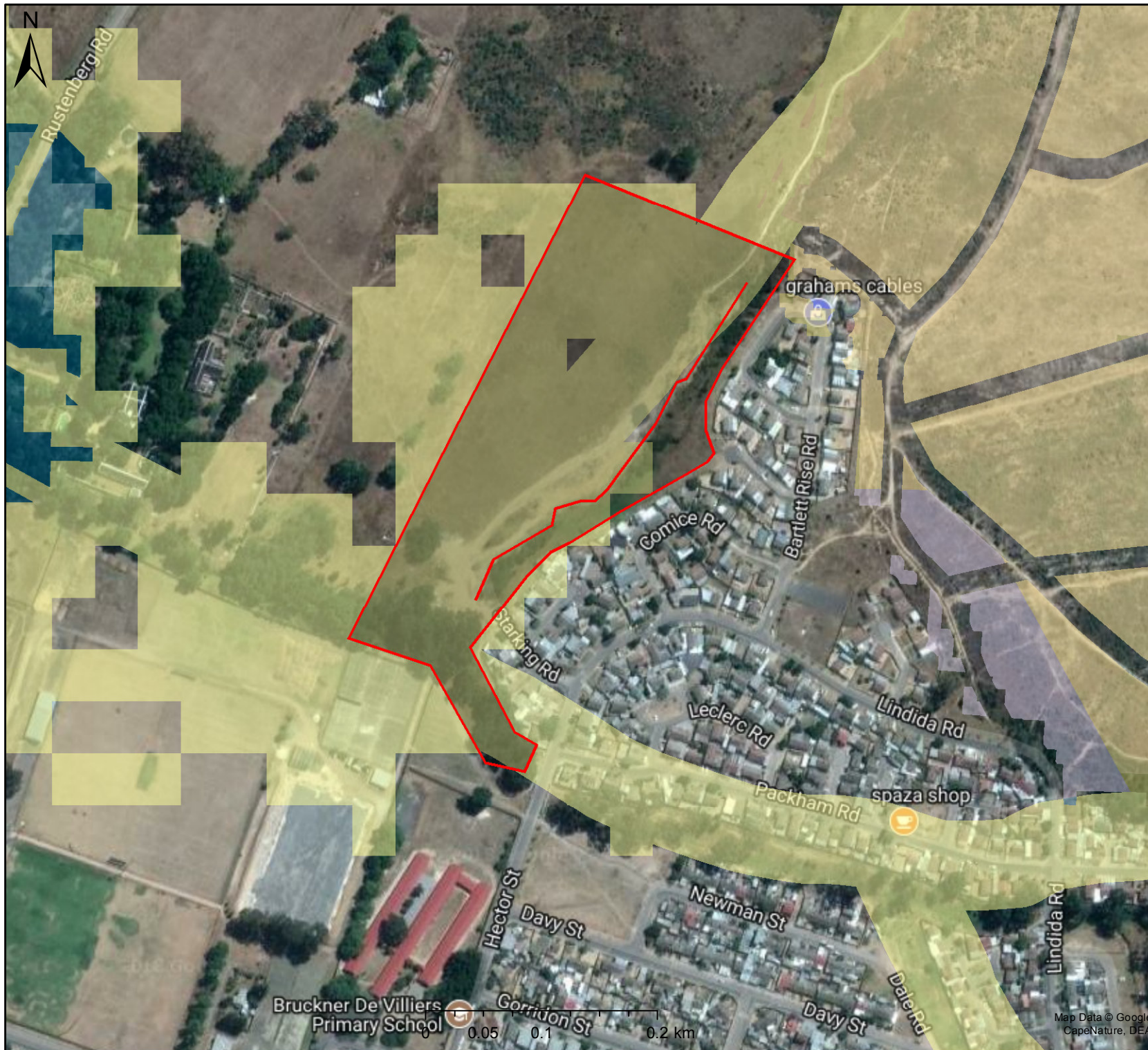


Biodiversity Map Erf 9445 Idas Valley



Legend

BSP ESA: Restore

- ESA2: Restore from plantation or high density IAP
- ESA2: Restore from other land use
- ESA2: Restore where appropriate (CT)
- Other Natural Area

BSP ESA

- ESA: Aquatic
- ESA: Terrestrial

BSP CBA: Degraded

- CBA2: Aquatic
- CBA2: Terrestrial

BSP CBA

- CBA: Terrestrial
- CBA: Terrestrial (CT)
- CBA: Forest
- CBA: River
- CBA: Estuary
- CBA: Wetland
- CBA: Aquatic (CT)

Scale: 1:4 514

Date created: June 8, 2018

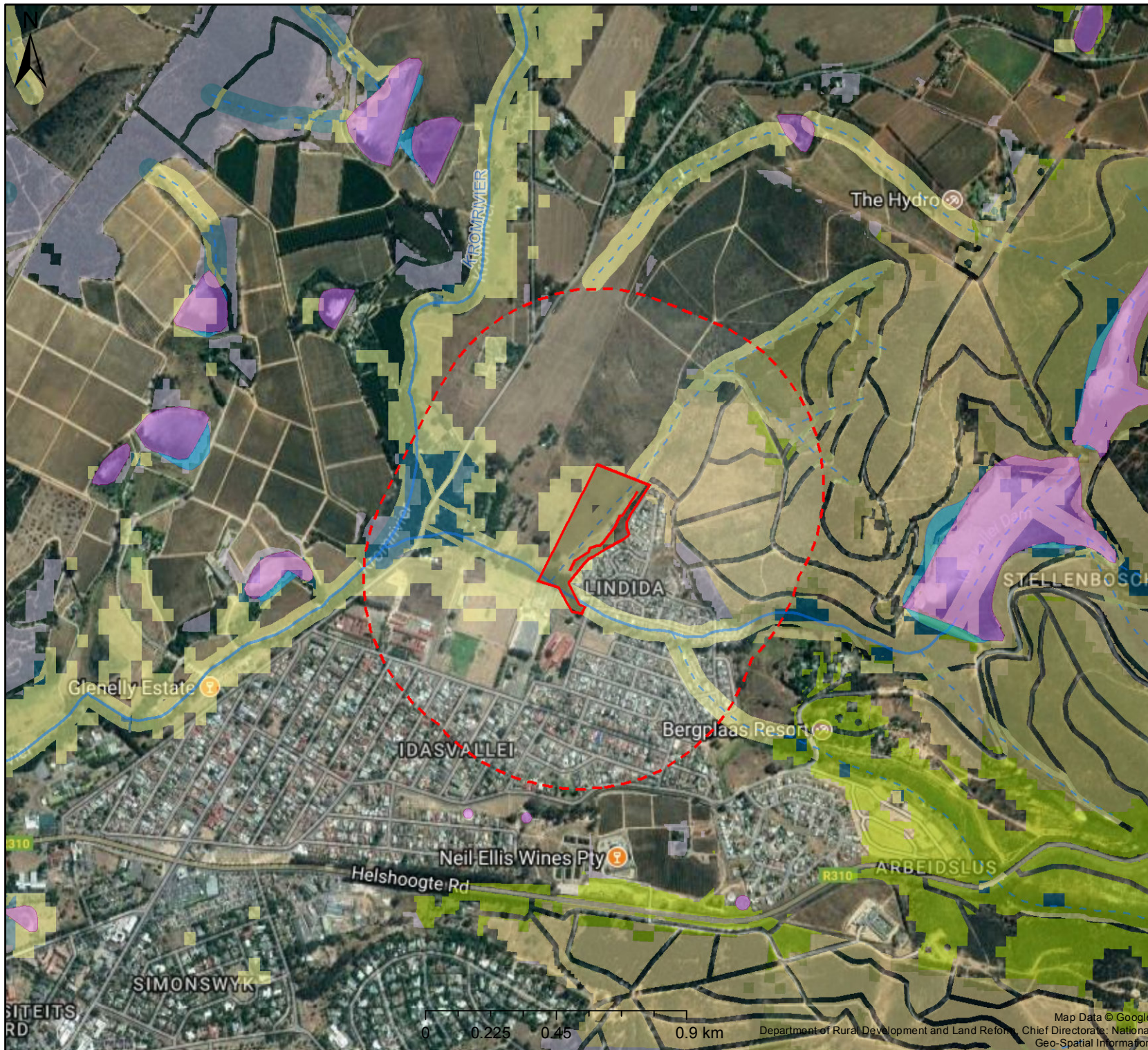


Western Cape
Government

Agriculture

Map Data © Google
CapeNature, DEA

500m Buffer Map - Erf 9445 Idas Valley



Legend

Wetlands (NFEPA)

- Artificial
- Estuaries
- Natural

Rivers

- Dry Water Course
- Non-Perennial
- Perennial
- Rapids
- Waterfall

BSP ESA: Restore

- ESA2: Restore from plantation or high density IAP
- ESA2: Restore from other land use
- ESA2: Restore where appropriate (CT)
- Other Natural Area

BSP ESA

- ESA: Aquatic
- ESA: Terrestrial

BSP CBA: Degraded

- CBA2: Aquatic
- CBA2: Terrestrial

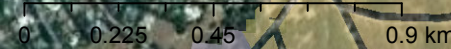
Scale: 1:18 056

Date created: June 8, 2018



Western Cape
Government

Agriculture



Map Data © Google
Department of Rural Development and Land Reform, Chief Directorate: National Geo-Spatial Information

Wetland Delineation

The wetland can be demarcated according to the presence of the river bed grass, which is clearly visible on a Google Earth image. A 5 to 10 meter buffer zone is shown in the Figure below. The wetland is marked in the north eastern corner of the site.



Figure 1. Erf 100866 wetland delineation

NOTE::

"The delineation as provided by van Driel (2015) only included a portion of the permanent zone of the large Seep wetland and not the temporary zone." - K. Marais

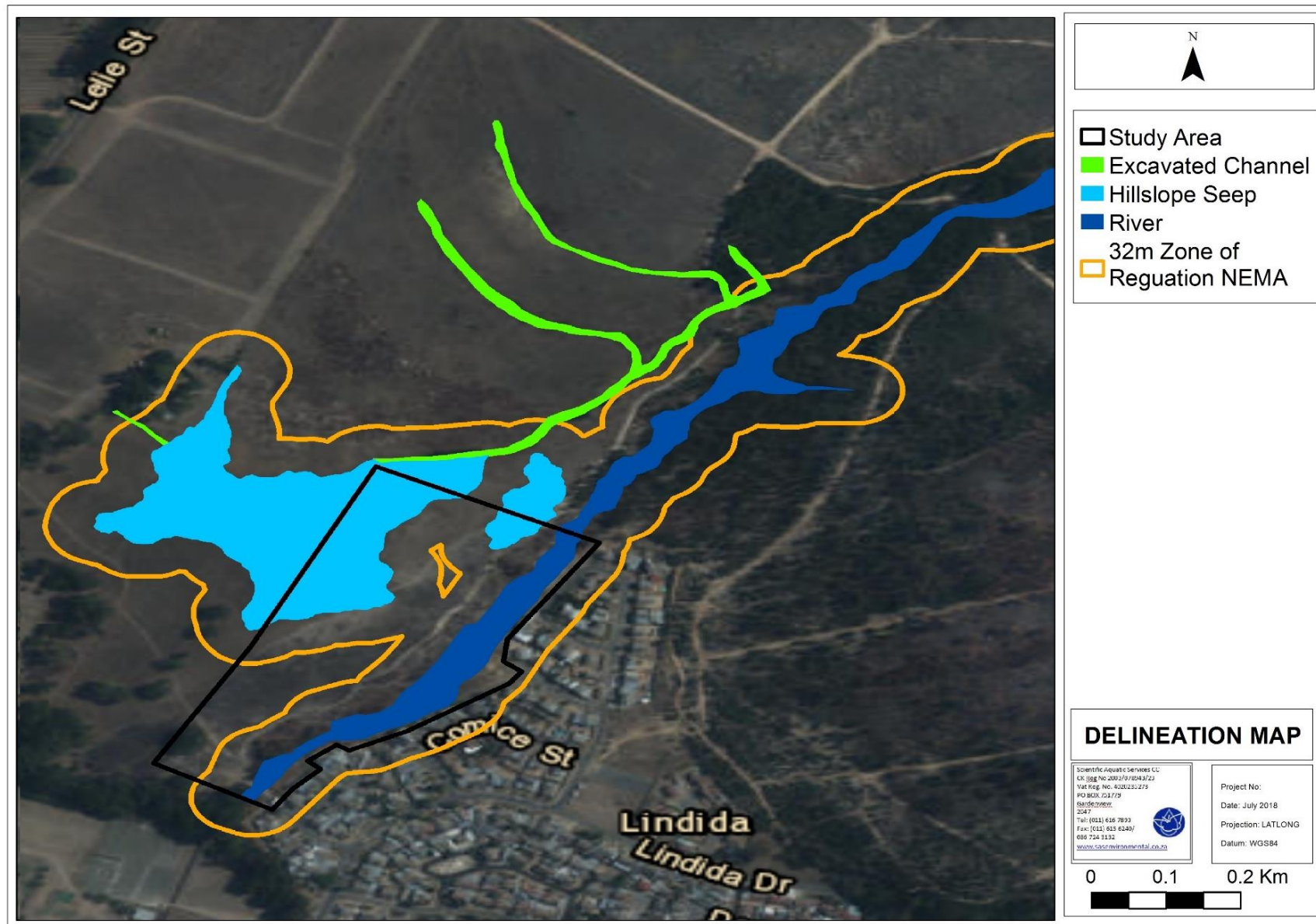


Figure 2: Delineation map and applicable Zones of Regulation for the Seep Wetlands and River within the study area.



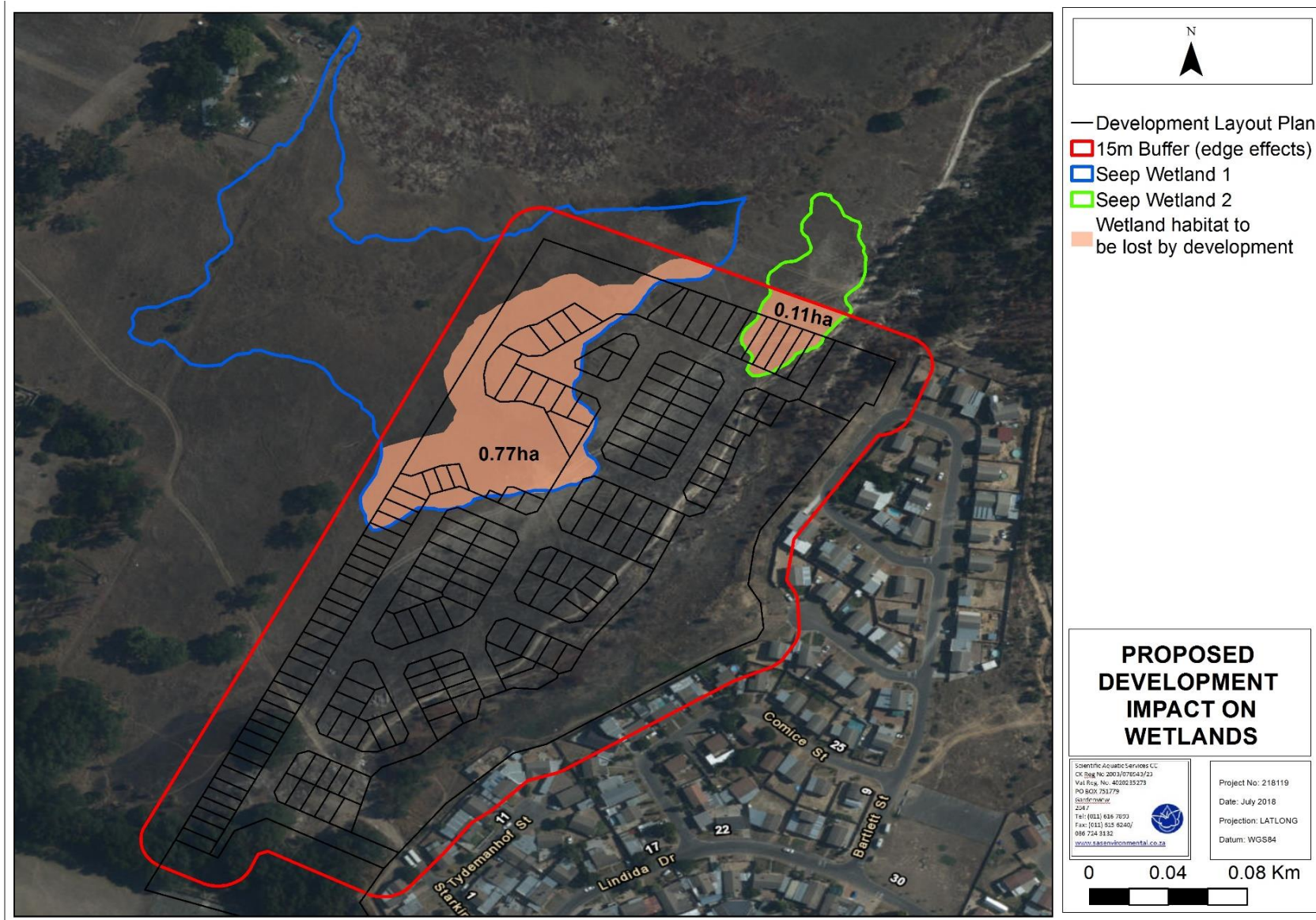


Figure 3: Map indicating development footprint, 15 m buffer included as edge effects and the anticipated loss of wetland habitat.

