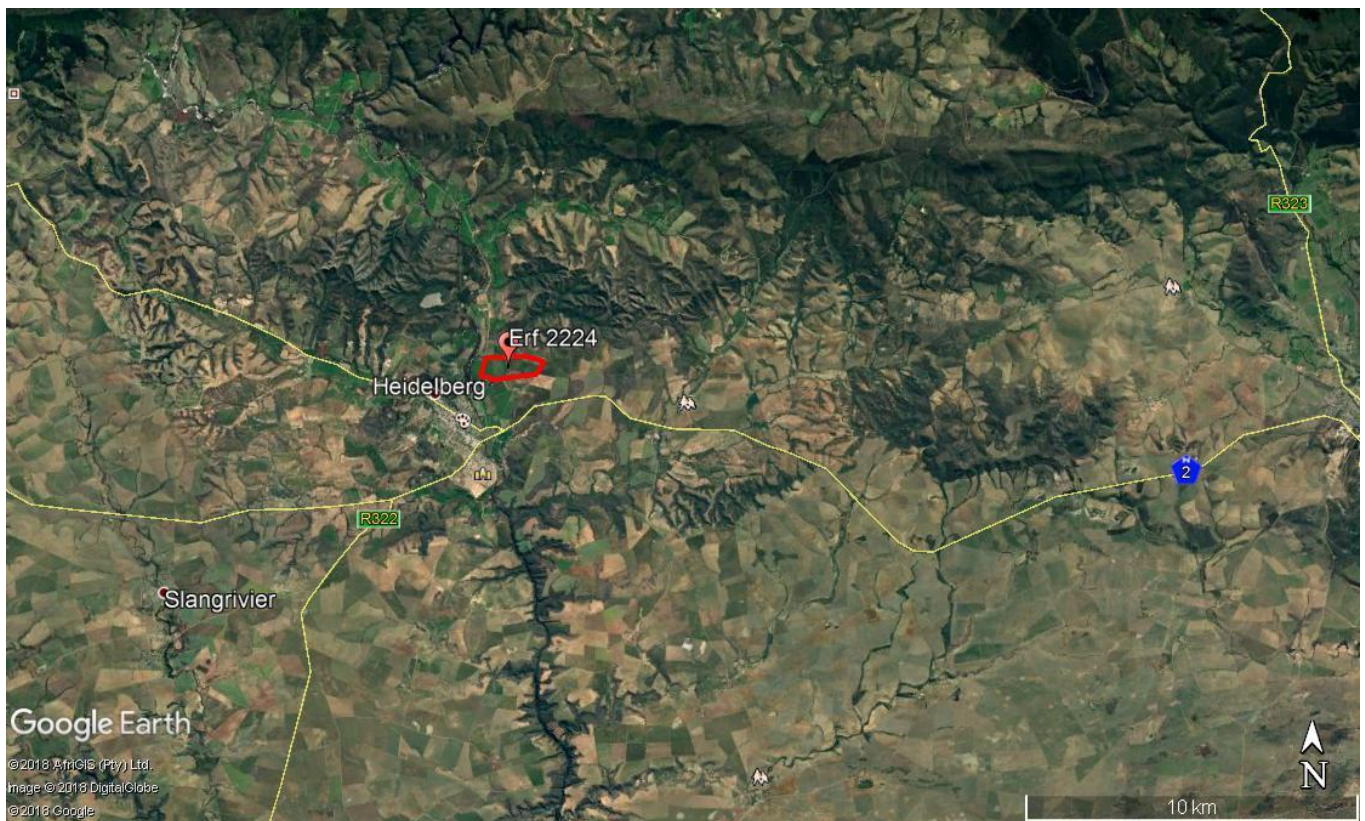


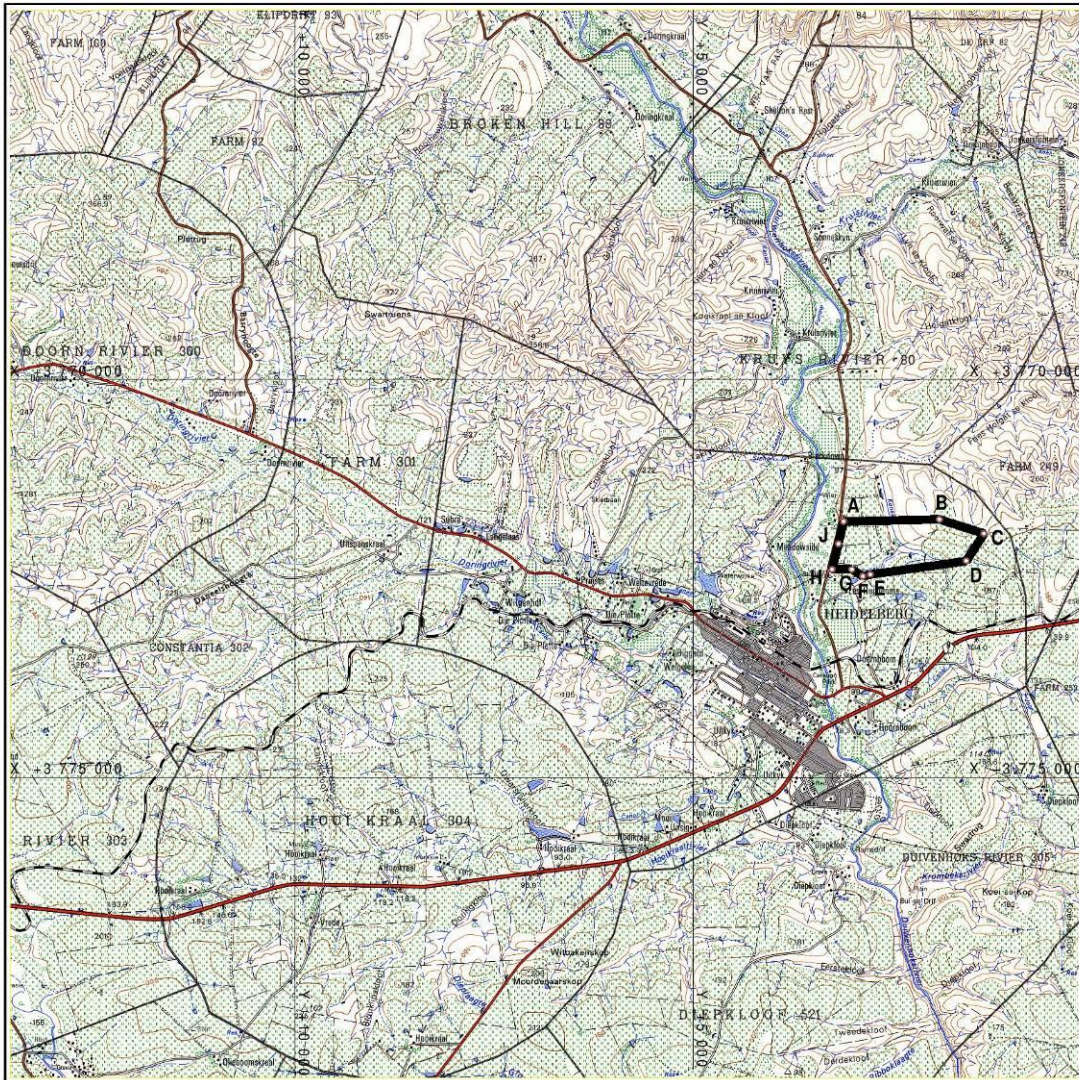
## MAPS



**Map 1:** Locality of Heidelberg in the Western Cape.



**Map 2:** Locality of the Erf 2224 near Heidelberg in the Western Cape.  
GPS co-ordinate for "middle" of surveyed site - 34° 04' 34.60"S  
20° 58' 23.28"E



**IMERY'S REFRACTORY MINERALS SOUTH AFRICA (Pty) Ltd**  
APPLICATION FOR a MINING RIGHT.

**Applicant:**  
IMERY'S REFRACTORY MINERALS SOUTH AFRICA (Pty) Ltd  
Reg.No.1973/012351/07

**Professional Land Surveyor:** Registration No.PL59252D  
Date: 06 September 2018

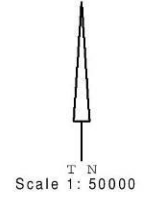
**MINERAL MINED : BENTONITE and ZEOLITE**

**CO-ORDINATE LIST** WGS Harlebeesthoek 94

PORTION DESCRIPTION	WG 21°	
	Name	Y Metres X
The figure A B C D E F G H J A represents a Mining Right in extent 101,1577 hectares over <b>ERF 2224 HEIDELBERG</b> Sited in the LANGEBERG MUNICIPALITY Administrative District of SWELLENDAM	A	+3 107,96 +3 771 785,58
	B	+1 900,43 +3 771 760,76
	C	+1 341,18 +3 771 939,15
	D	+1 563,14 +3 772 282,87
	E	+2 769,71 +3 772 451,37
	F	+2 863,16 +3 772 472,66
	G	+3 003,34 +3 772 388,47
	H	+3 251,32 +3 772 388,99
	J	+3 170,20 +3 772 067,37

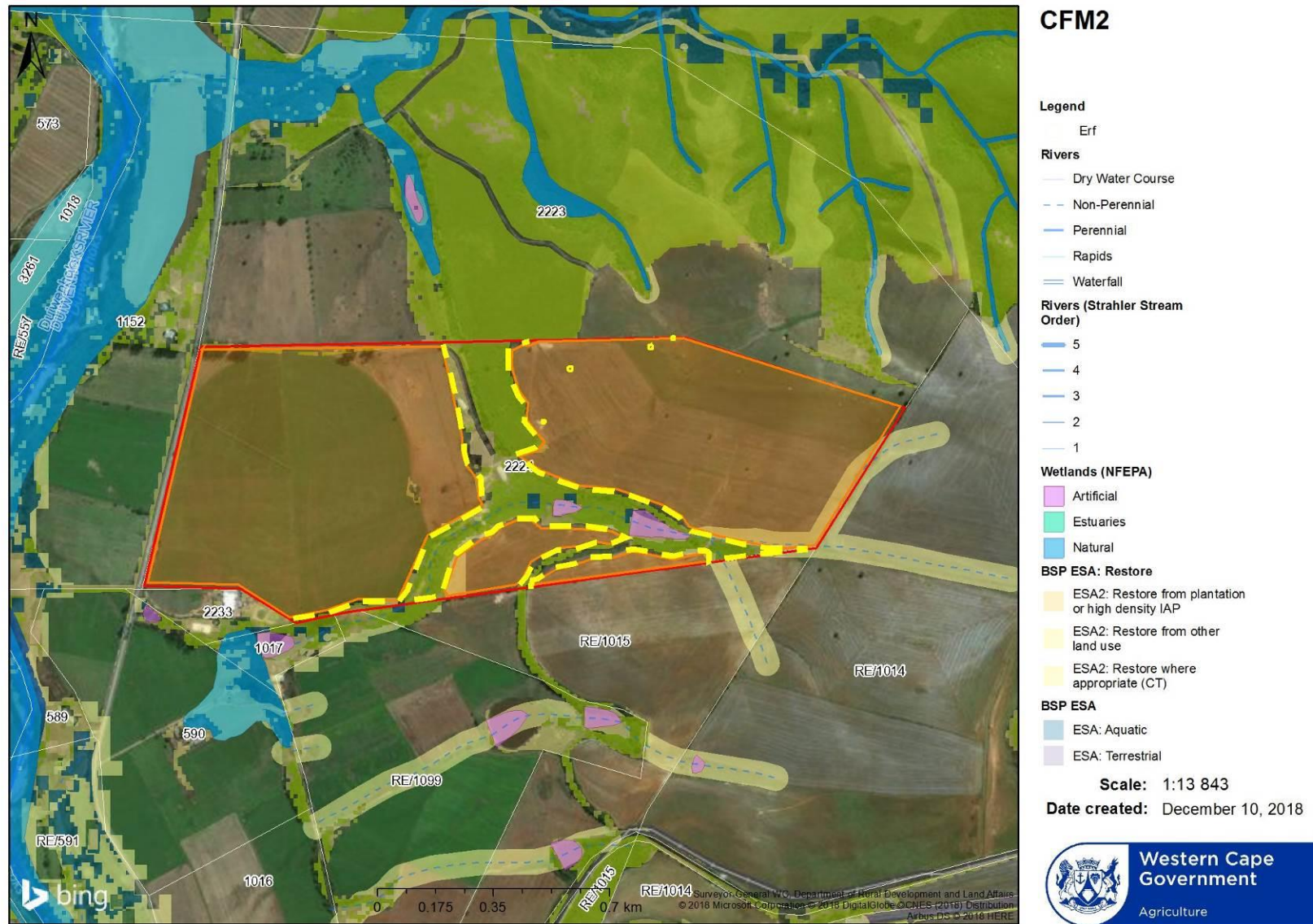
for which IMERY'S REFRACTORY MINERALS SOUTH AFRICA (Pty) Ltd with registration No.1973/012351/07 has applied for a Mining Right

Sketch plan prepared by  
MERIDIAN SURVEYS INC  
230 Bootes Street,  
Waterkloof Ridge,  
Pretoria 0027,  
Tel (012) 346-1489  
Fax (012) 346 1076,  
E-mail:info@msurveys.co.za



REGIONAL MANAGER	Date	REFERENCE
Western Cape Region		<ul style="list-style-type: none"> <li>International Boundary and Beacon</li> <li>Provincial Boundary</li> <li>Protected Area</li> <li>Potential River</li> <li>Perennial Water</li> <li>Non-Perennial River</li> <li>Non-Perennial Water</li> <li>Dry Water Course</li> <li>Dry Pan</li> <li>Marsh and Wet</li> <li>Postfire (bare) ground</li> <li>Peak Tower, Reservoir, Water Point</li> <li>Scattered Rocks</li> <li>Prominent Rock Outcrop</li> <li>Coarse Sand</li> <li>Woodland</li> <li>Cultivated Land</li> <li>Orchard or Vineyard</li> <li>Recreation Ground</li> <li>Row of Trees</li> </ul>
<b>APPLICANT</b>	Date	
Head of Strategy and Corporate Services for and behalf of IMERY'S REFRACTORY MINERALS SOUTH AFRICA (Pty) Ltd		

Map 3: Boundary of Erf 2224 as surveyed for proposed prospecting activities.



**Map 4:** Biodiversity GIS (“BGIS”) land use map indicating mapped terrestrial and aquatic Critical Biodiversity Areas (“CBA”), Ecological Support Areas (“ESA”) and associated buffer areas as according to Fine Scale Planning (“FSP”) for Hessequa in relation to the proposed prospecting areas on transformed cultivated agricultural land (as outlined in yellow).

**SITE PHOTOS**



**Site Photo 1:** Erven 2224 - Prospecting activities area as proposed on transformed cultivated land.



**Site Photo 2:** Erven 2224 - Prospecting activities area as proposed on transformed cultivated land.



**Site Photo 3:** Erven 2224 - Prospecting activities area as proposed on transformed cultivated land.



**Site Photo 4:** Erven 2224 - Prospecting activities area as proposed on transformed cultivated land.



**Site Photo 5:** Erven 2224 - Prospecting activities area as proposed on transformed cultivated land.



**Site Photo 6:** Erven 2224 - Prospecting activities area as proposed on transformed cultivated land.



**Site Photo 7:** Erven 2224 - Prospecting activities area as proposed on transformed cultivated land.



**Site Photo 8:** Erven 2224 - Prospecting activities area as proposed on transformed cultivated land.