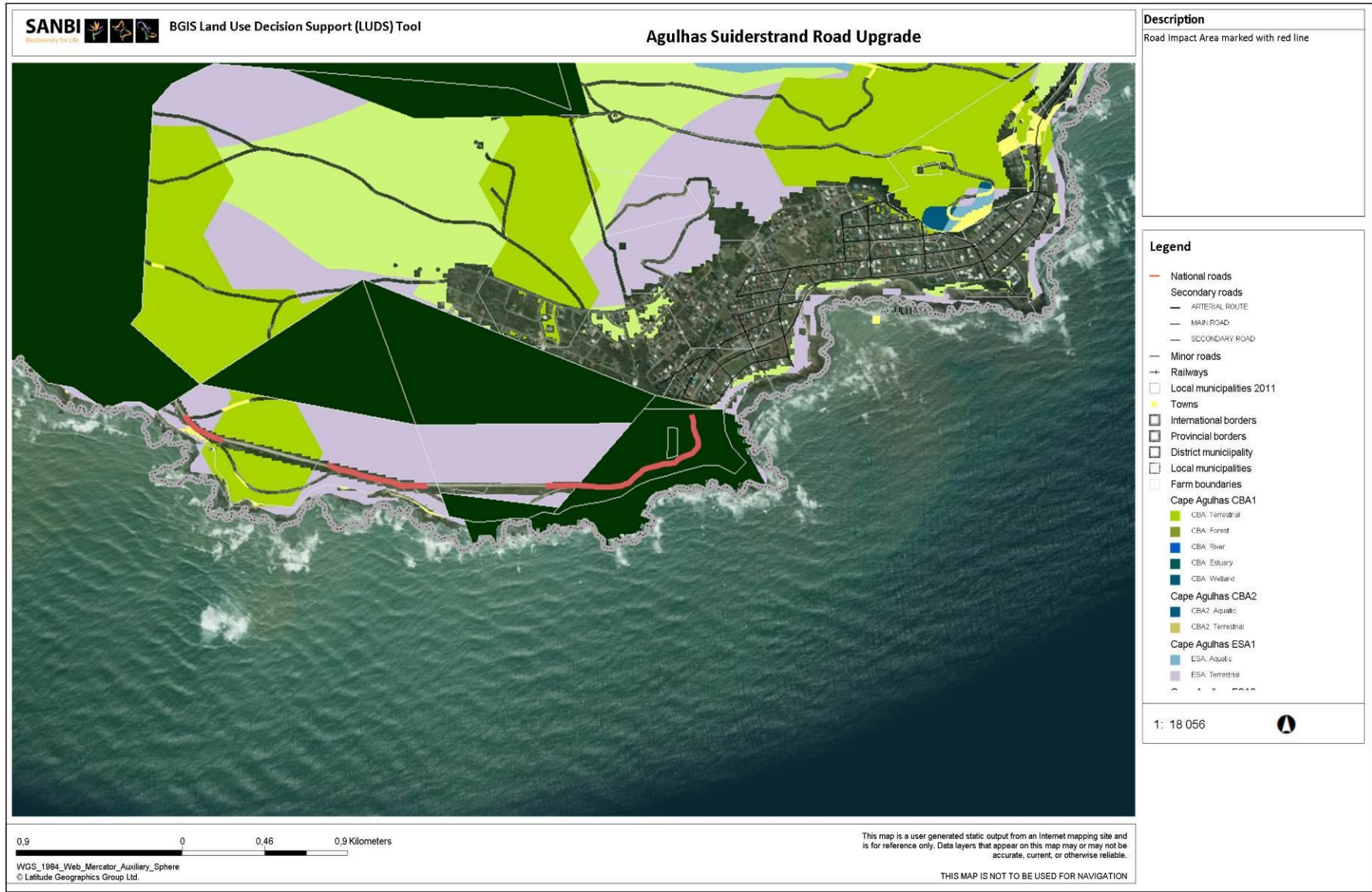


Appendix D:
Biodiversity Overlay Map/s

Biodiversity Map D1:

**Biodiversity features on the site and
surrounds as per WCBSP (2017)**



Biodiversity Map D1: Critical Biodiversity Areas (light green), Ecological Support Areas (purple) and Protected Areas (dark green) according to the WCBS (2017) mapping.