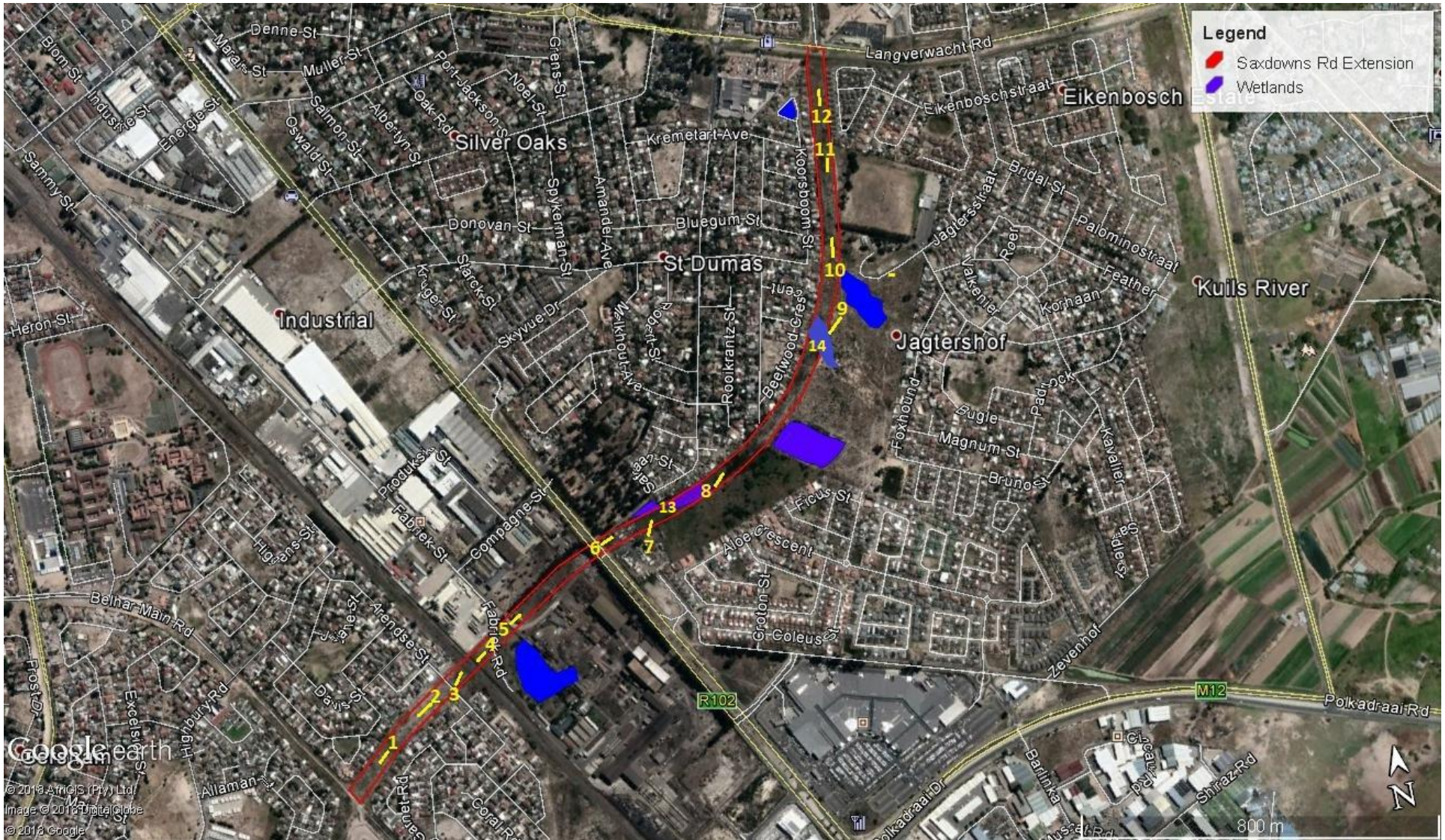


Appendix C:

Photographs



Appendix C Proposed Development Site Photograph Map: Location and direction of site photos taken during the survey



Photo 1: Start of new road at location where it will eventually connect with Belhar Main Rd.



Photo 2: Proposed development site.



Photo 3: Proposed development site, where the new road will go over the railway line.



Photo 4: Proposed development site, where the new road will go over the railway line at the Cisco industrial property.



Photo 5: Proposed development site at the Cisco industrial property.



Photo 6: Proposed development site, next to the scrap yard.



Photo 7: Proposed development site, next to the scrap yard.



Photo 8: Proposed development site.



Photo 9: Proposed development site with seasonal wetland that will be partially filled during the proposed development.



Photo 10: Proposed development site next to school grounds.



Photo 11: Proposed development site next to school grounds.



Photo 12: End of proposed new road development site where it will connect with Langverwacht Rd.



Photo 13.1: A section of wetland 2 which will be partially filled and developed upon.



Photo 13.2: A section of wetland 2 which is proposed to be completely filled and development upon.



Photo 14.1: View of Wetland 4 that will be partially filled and impacted upon.



Photo 14.2: Close-up view of Wetland 4.