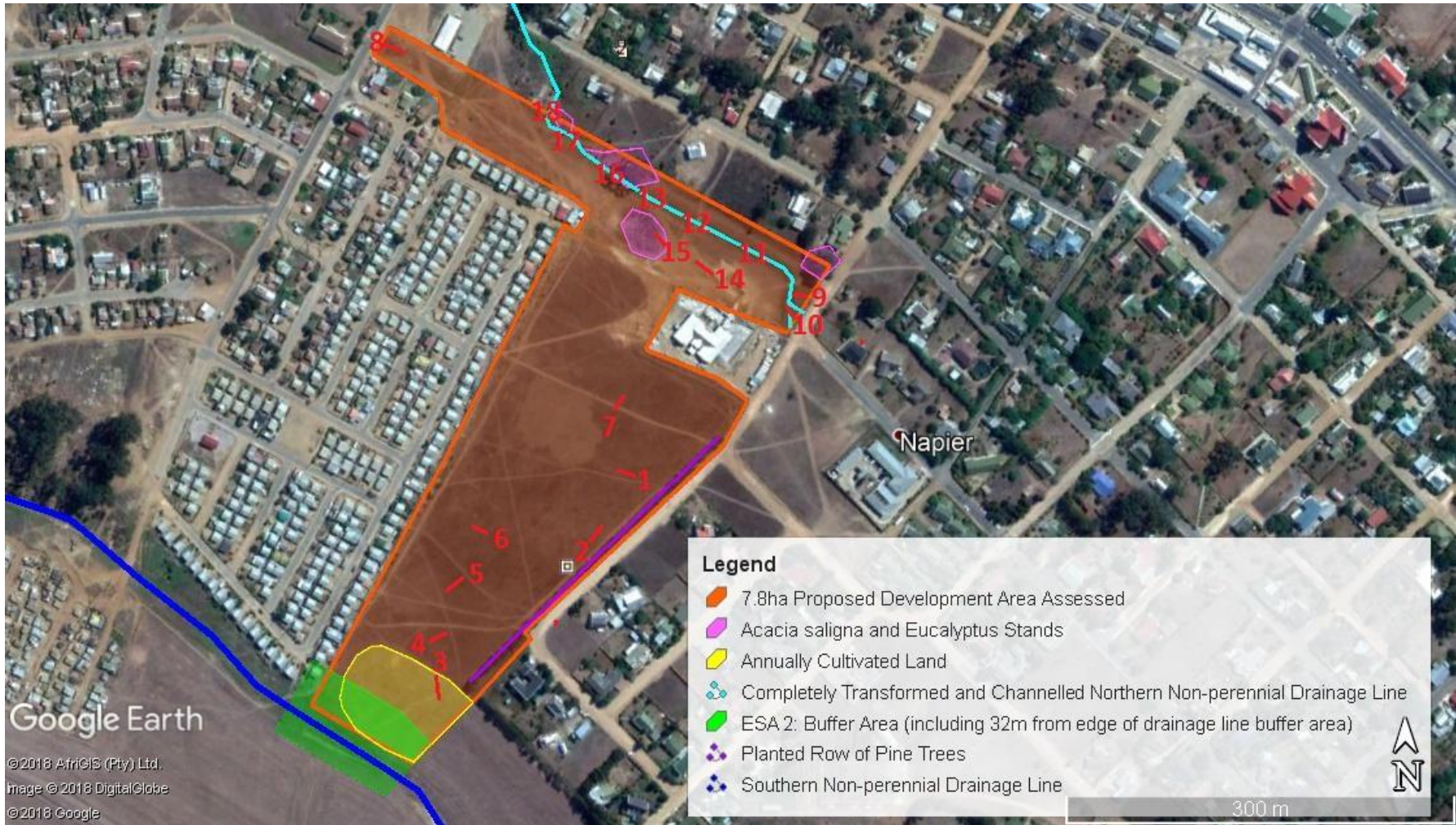


# **Appendix C:**

# **Photographs**



**Appendix C Proposed Development Site Photograph Map: Location and direction of site photos taken during the survey**



**Photo 1:** Proposed development area



**Photo 2:** Proposed development area.



**Photo 3:** Cultivated land and ESA2 Buffer area along the drainage line south of the study site.



**Photo 4:** Proposed development area, with planted row of pine trees.



**Photo 5:** Proposed development area



**Photo 6:** Proposed development area.



**Photo 7:** Proposed development area.



**Photo 8:** Proposed development area



**Photo 9:** Proposed development area.



**Photo 10:** Proposed development area, start of transformed northern drainage line.



**Photo 11:** Proposed development area, transformed northern drainage line.



**Photo 12:** Proposed development area, transformed northern drainage line.





**Photo 13:** Proposed development area, transformed northern drainage line.



**Photo 14:** Proposed development area, transformed northern drainage line.



**Photo 15:** Proposed development area, *Acacia saligna* stand.



**Photo 16:** Proposed development area, transformed northern drainage line.



**Photo 17:** Proposed development area, transformed northern drainage line.



**Photo 18:** Proposed development area, end of transformed northern drainage line on study site.