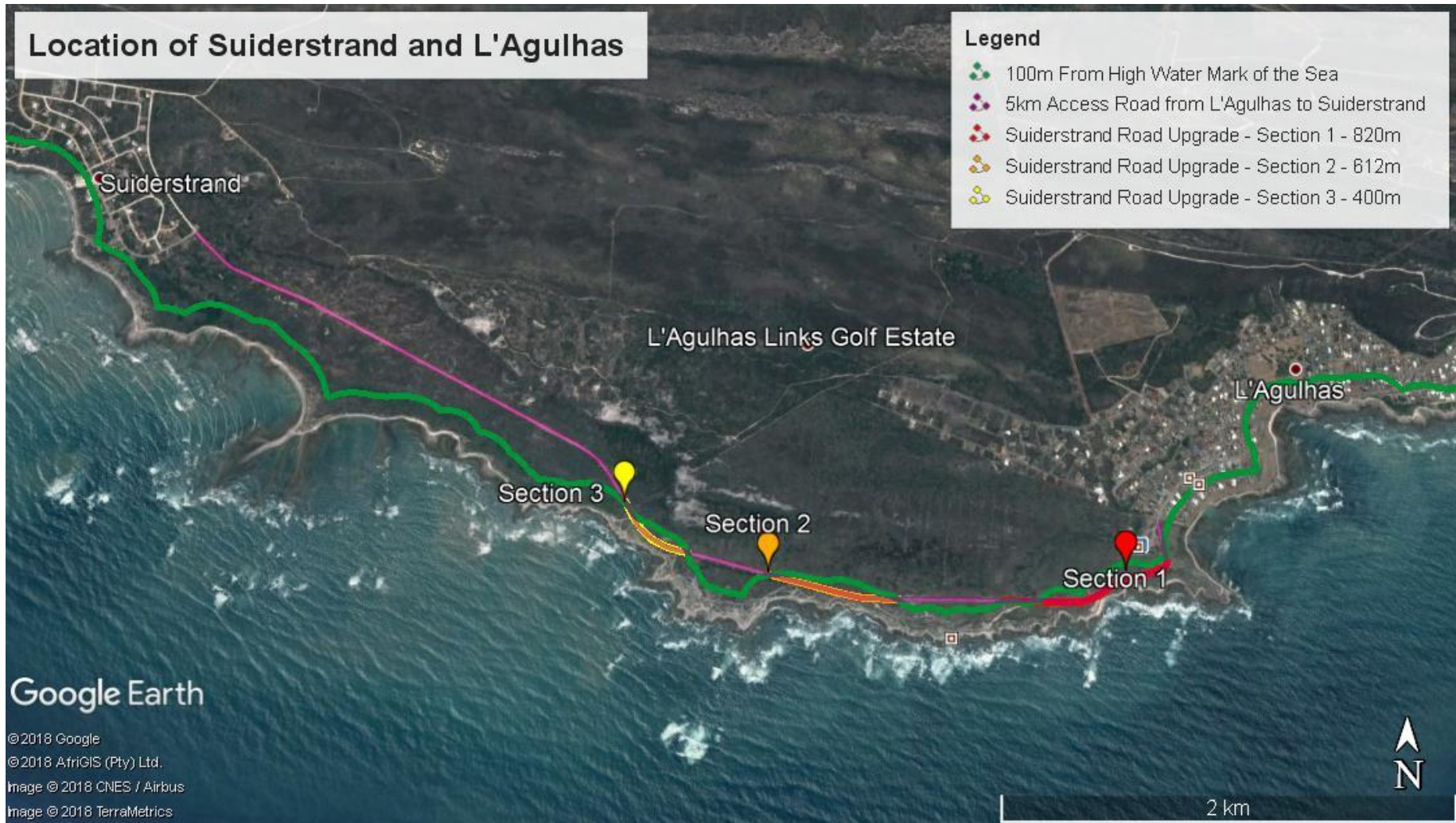


Appendix A:
Locality Map/s

Locality Map/s A1:
Google Earth Locality Maps



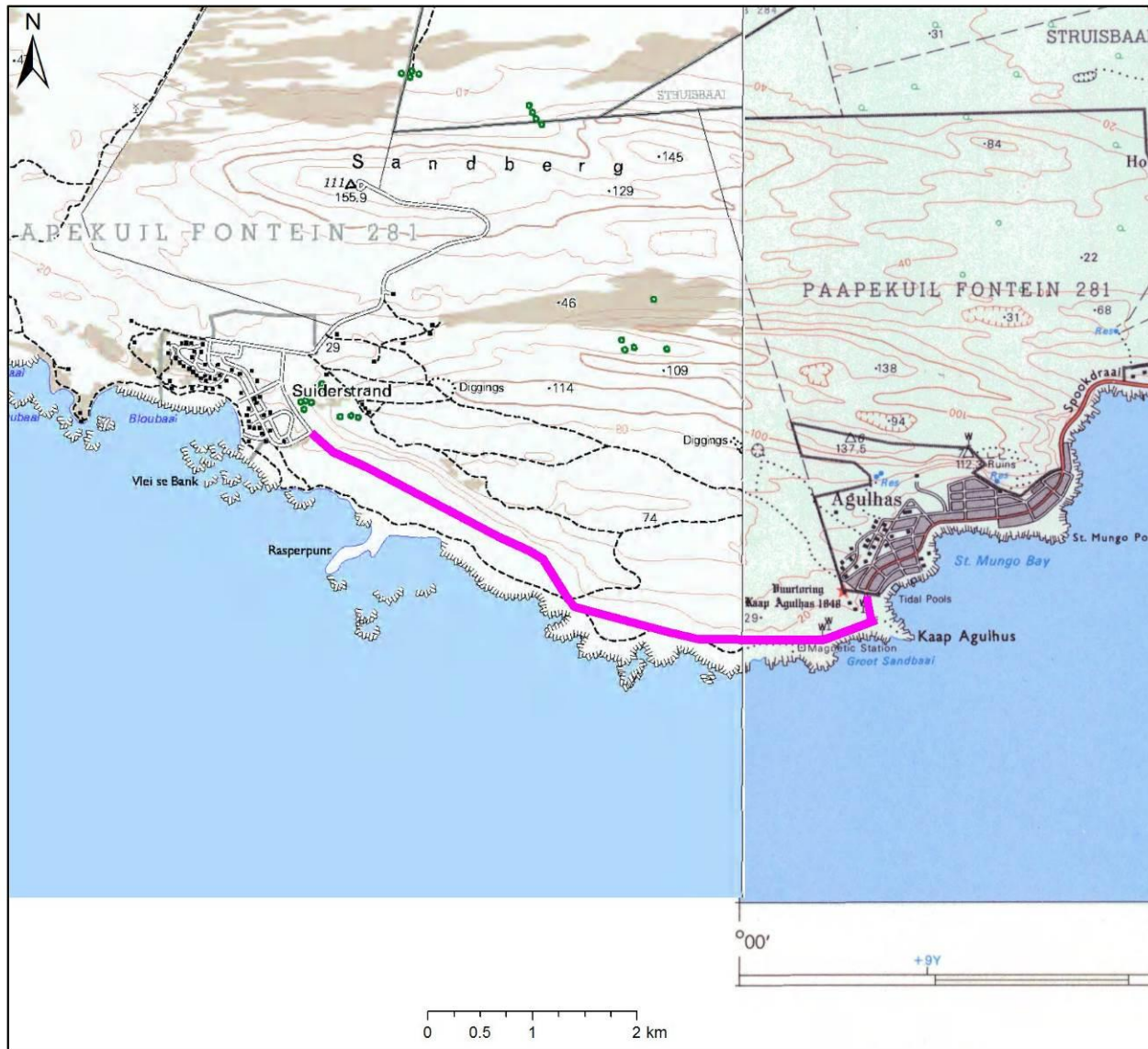
Map 1.1: Location of Suiderstrand and L'Agulhas



Map 1.2: Location of 5km access road between Suiderstrand and L'Agulhas, and relevant three sections falling within the 100m from high water mark of the sea.

Locality Map/s A2:

1:50 000 Topographical Locality Map



L'Agulhas to Suiderstrand Road

Scale: 1:50 000
Date created: June 13, 2018



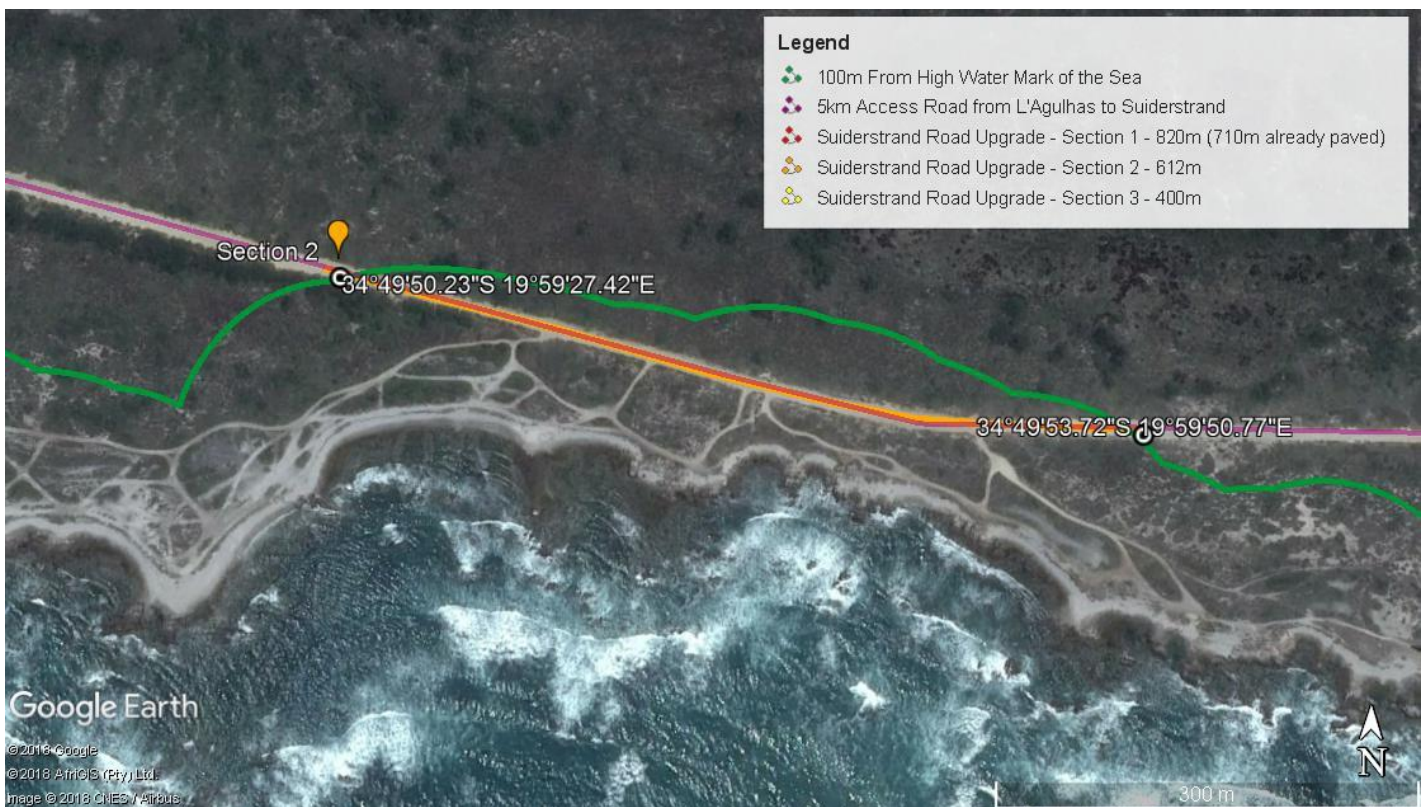
Map 2: Location of 5km access road between Suiderstrand and L'Agulhas, 1: 50 000 topographical map.

Locality Map/s A3:

Locality Maps with GPS Co-ordinates



Map 3.1: Location Section 1 falling within the 100m from high water mark of the sea along the 5km access road between Suiderstrand and L'Agulhas with GPS co-ordinates of start and end points.



Map 3.2: Location Section 2 falling within the 100m from high water mark of the sea along the 5km access road between Suiderstrand and L'Agulhas with GPS co-ordinates of start and end points.



Map 3.3: Location Section 3 falling within the 100m from high water mark of the sea along the 5km access road between Suiderstrand and L'Agulhas with GPS co-ordinates of start and end points.