



Appendix C: Biodiversity Overlay-OVERALL

Legend

BSP ESA: Restore

- ESA2: Restore from plantation or high density IAP
- ESA2: Restore from other land use
- ESA2: Restore where appropriate (CT)

BSP ESA

- ESA: Aquatic
- ESA: Terrestrial

BSP CBA: Degraded

- CBA2: Aquatic
- CBA2: Terrestrial

BSP CBA

- CBA: Terrestrial
- CBA: Terrestrial (CT)
- CBA: Forest
- CBA: River
- CBA: Estuary
- CBA: Wetland
- CBA: Aquatic (CT)

Rivers

- Dry Water Course
- Non-Perennial
- Perennial
- Rapids
- Waterfall

Scale: 1:7 000

Date created: November 2, 2018



**Western Cape
Government**

Agriculture

Appendix C 2: Non perennial river



Legend

Rivers

- Dry Water Course
- - - Non-Perennial
- Perennial
- Rapids
- Waterfall

Scale: 1:3 000

Date created: November 2, 2018



Western Cape
Government

Agriculture

Vooruitsig
Primary School 0.15 km

Map Data © Google
Department of Rural Development and Land Reform, Chief Directorate: National
Geo-Spatial Information



Appendix C 3: Non perennial river

Legend

Rivers

- Dry Water Course
- - Non-Perennial
- Perennial
- Rapids
- = Waterfall

Scale: 1:7 000

Date created: November 2, 2018



**Western Cape
Government**

Agriculture



Darling: River east of 17th Ave

Legend

Rivers

- Perennial
- - Non-Perennial
- Dry Water Course
- Rapids
- = Waterfall

Scale: 1:4 514
 Date created: April 3, 2019

Compiled with CapeFarmMapper



**Western Cape
Government**

Agriculture

Map Data © Google
 Department of Rural Development and Land Reform, Chief Directorate: National
 Geo-Spatial Information



Darling: River east of 17th Ave-ESA :Restore

Legend

BSP ESA: Restore

- ESA2: Restore from plantation or high density IAP
- ESA2: Restore from other land use
- ESA2: Restore where appropriate (CT)

Rivers

- Perennial
- Non-Perennial
- Dry Water Course
- Rapids
- Waterfall

Scale: 1:4 514

Date created: April 3, 2019

Compiled with CapeFarmMapper



Western Cape Government

Agriculture

Map Data © Google
 Department of Rural Development and Land Reform, Chief Directorate: National Geo-Spatial Information
 CapeNature, DEA



Darling: Wetland and terrestrial CBA west of

Legend

BSP CBA

- CBA: Terrestrial
- CBA: Terrestrial (CT)
- CBA: Forest
- CBA: River
- CBA: Estuary
- CBA: Wetland
- CBA: Aquatic (CT)

Rivers

- Perennial
- Non-Perennial
- Dry Water Course
- Rapids
- Waterfall

Scale: 1:4 514

Date created: April 3, 2019

Compiled with CapeFarmMapper



**Western Cape
Government**

Agriculture

Map Data © Google
 Department of Rural Development and Land Reform, Chief Directorate: National
 Geo-Spatial Information
 CapeNature, DEA

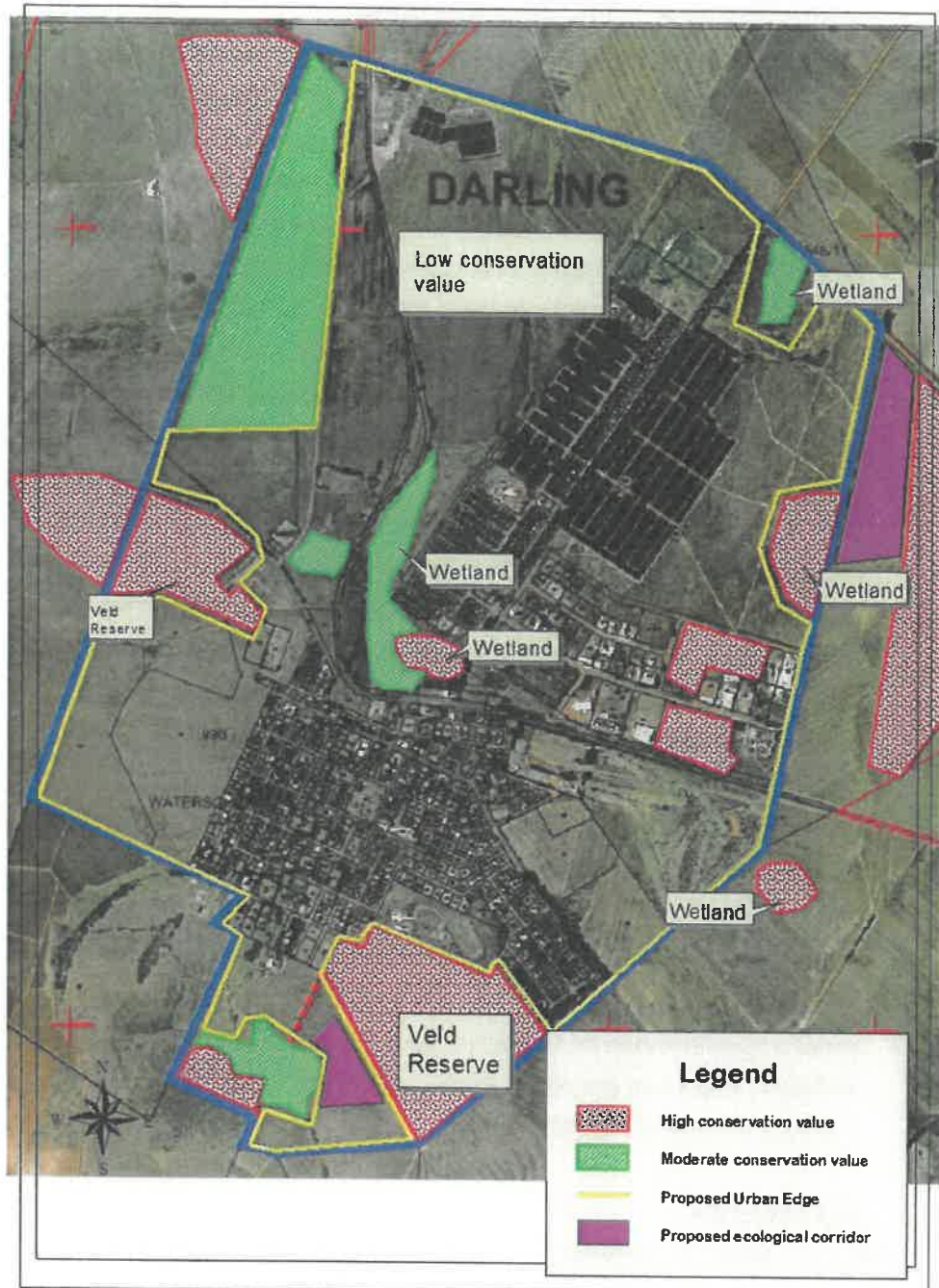


Plate 3: Sensitivity map of Darling area, indicating proposed Urban Edge based on ecological input. No development or further subdivision should be permitted in the High conservation value areas, and in the other areas a detailed botanical assessment is required before any application to subdivide is submitted. Unhatched areas of Low conservation value.