

APPENDIX C: Site Photographs as recorded during the site visit on 07 January 2020

Pic 1: Southern boundary.



Pic 2: Southern entrance looking north.





Pic 3: Boundary line running east west. Note alien invasive vegetation.



Pic 4: East West boundary looking West.





Pic 5: Access area between main warehouse and office building, looking west.



Pic 6: Covered walkway joining office block with warehouse, looking south.





Pic 7: Main warehouse looking south. Note inclined loading bay.



Pic 8: Office building looking from Bolt Avenue in an easterly direction.





Pic 9: "Rear" of the warehouse looking in a south westerly direction.



Pic 10: Main warehouse (northern) looking east.

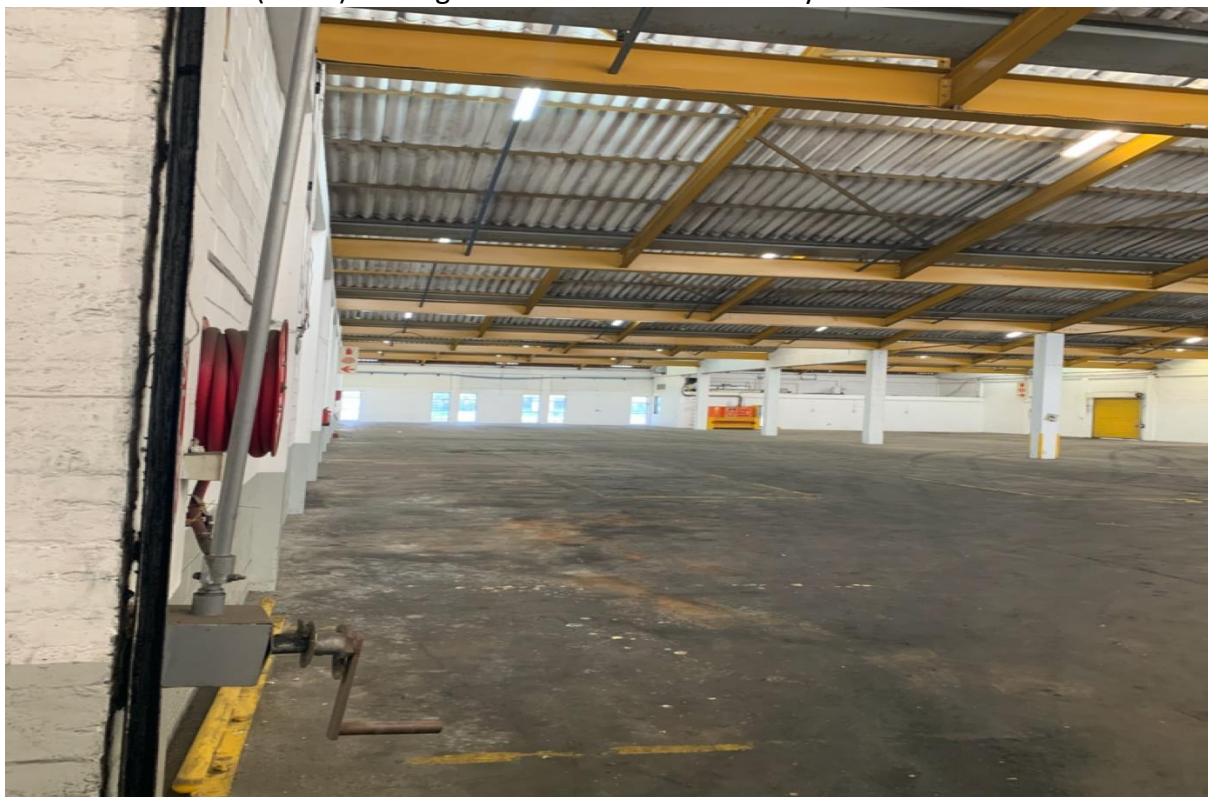




Pic 11: Warehouse (northern) looking west at loading bay doors.



Pic 12: Warehouse (south) looking west down inside boundary wall.





Pic 13: Bolt Avenue boundary fence showing proposed new entrance from Bolt Avenue. Note stormwater drain.



Pic 14: Eskom Transformer. Note site plan indicates this is on a separate "Erf".





Pic 15: Open area on South Eastern side of the site, adjacent to railway line. Note weeds and alien vegetation.

