

PLANSCAPE
TOWN PLANNERS

ENVIRONMENTAL SENSITIVITY MAP

PORTION 7 OF FARM 187, KENHARDT



Date: 06/02/19

PO Box 557, Moorreesburg, 7310, Cell 0722026587, Fax 086 697 2069, planscape@telkomsa.net

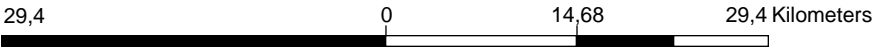
Wine Estate Capital Management Portion 7

Description

Wine Estate Capital Management (Pty) Ltd 400 MW Solar PV Electricity Generation Facility on Portion 7 of Farm 187.
132kV power line to connect to the Aries Substation on portion 3 of Farm 187.

- Legend**
- Namakwa Biodiversity Sector Plan
 - Local municipalities - LUDS
 - Namakwa - Aquatic CBA map
 - Critical Biodiversity Area (type 1)
 - Critical Biodiveristy Area (type 2)
 - Ecological Support Areas
 - Namakwa - Terrestrial CBA map
 - Critical Biodiversity Area (type 1)
 - Critical Biodiverwsity Area (type 2)
 - Ecological Support Area
 - Namakwa - Report Aquatic CBA map legend
 - CBA aquatic (type 1)
 - CBA aquatic (type 2)
 - Ecological Support Areas aquatic

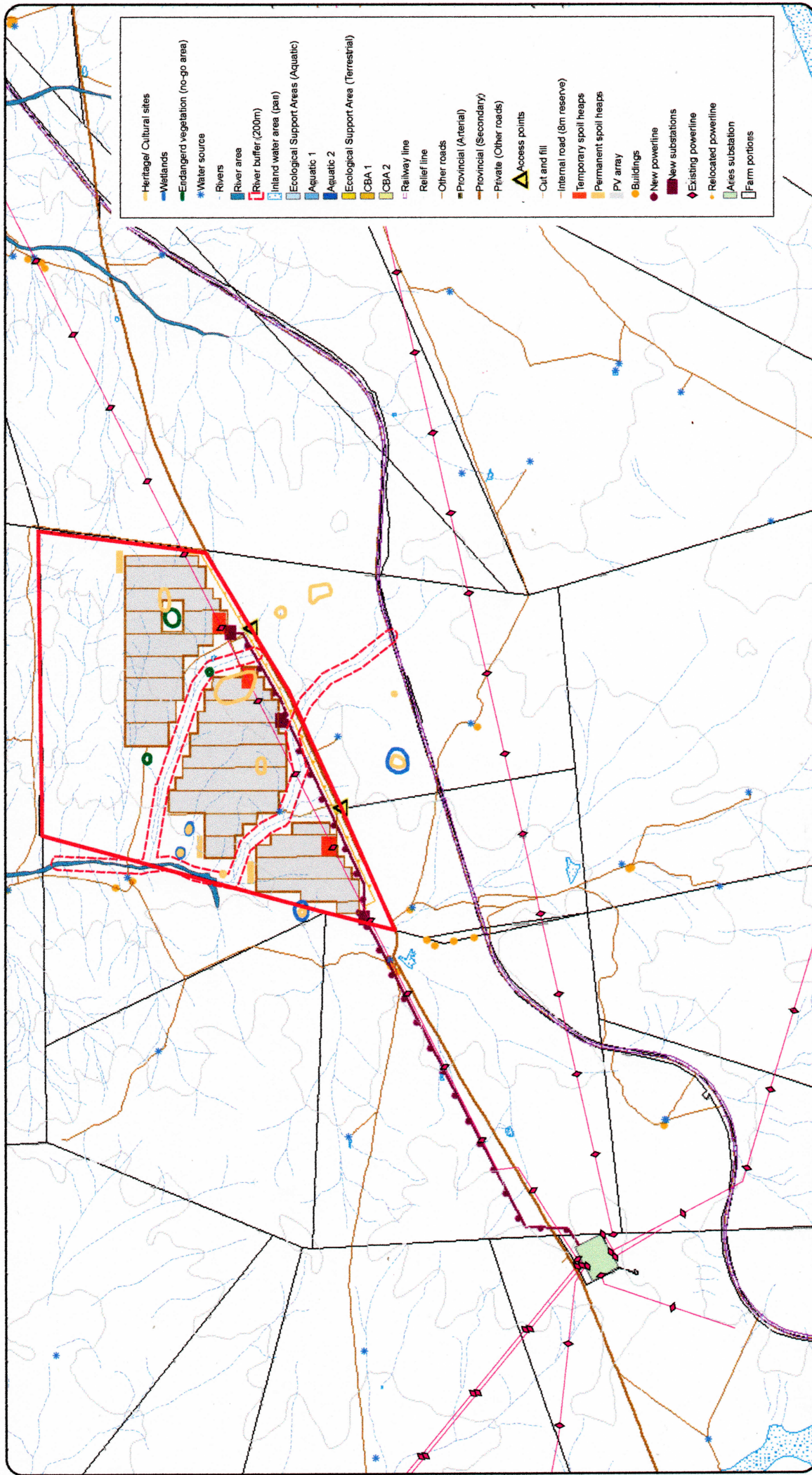
1: 577 790



WGS_1984_Web_Mercator_Auxiliary_Sphere
© Latitude Geographics Group Ltd.

This map is a user generated static output from an Internet mapping site and is for reference only. Data layers that appear on this map may or may not be accurate, current, or otherwise reliable.

THIS MAP IS NOT TO BE USED FOR NAVIGATION



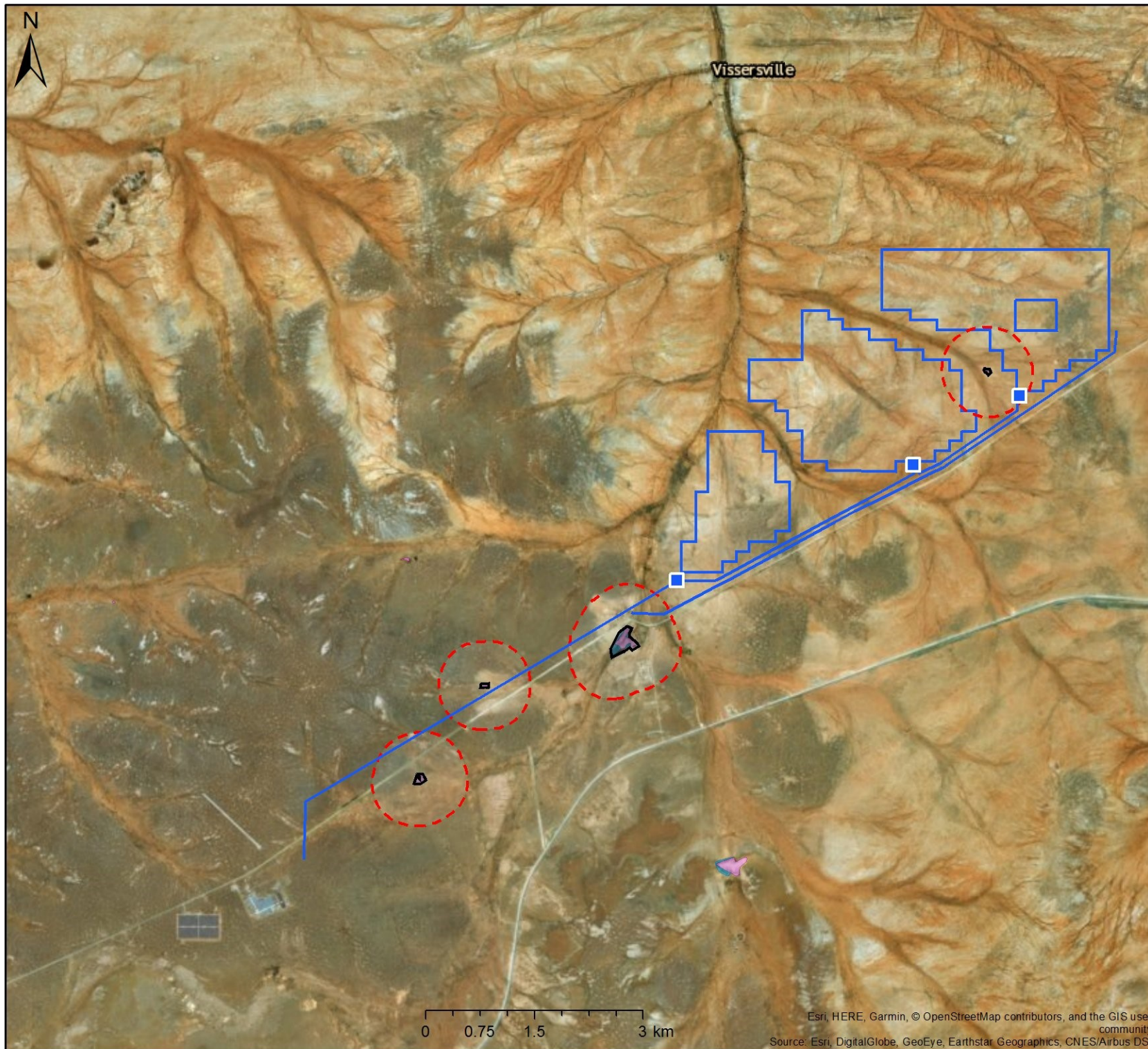
PLANSCAPE
TOWN PLANNERS

SUPERIMPOSED MAP PORTION 7 OF FARM 187, KENHARDT



Date: 06/02/19

PO Box 557, Moorreesburg, 7310, Cell 0722026587, Fax 086 697 2069, planscape@telkomsa.net



Wetlands (NFEPA) with 500 buffers indicated

Legend

Wetlands (NFEPA)

- Artificial
- Estuaries
- Natural

Scale: 1:72 224

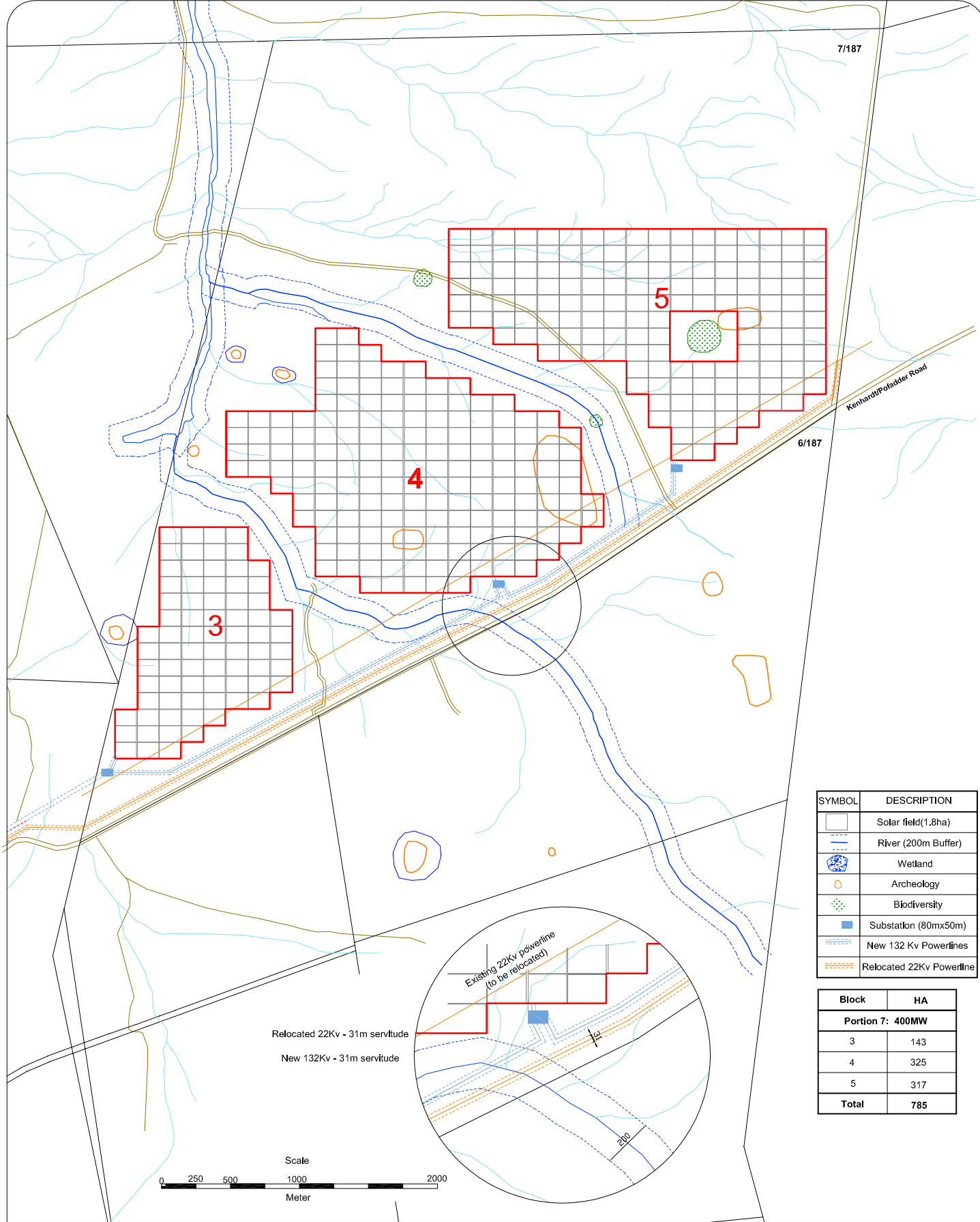
Date created: January 4, 2019



Western Cape
Government

Agriculture

Esri, HERE, Garmin, © OpenStreetMap contributors, and the GIS user community
Source: Esri, DigitalGlobe, GeoEye, Earthstar Geographics, CNES/Airbus DS,



SYMBOL	DESCRIPTION
	Solar field(1.8ha)
	River (200m Buffer)
	Wetland
	Archeology
	Biodiversity
	Substation (80mx50m)
	New 132 Kv Powerlines
	Relocated 22Kv Powerline

Block	HA
Portion 7: 400MW	
3	143
4	325
5	317
Total	785

Project: Portion 7 of Farm 187, Kenhardt

Title: Site Development plan

Owner: Solar Energy Land Pty Ltd



Notes: Configuration of solar arrays
subject to detailed design

Datum: 01/11/18

Reference:207~6/7-187-KAI

