

Appendix B: Biodiversity Map



Legend

Rivers

- Dry Water Course
- - - Non-Perennial
- Perennial
- Rapids
- = Waterfall

BSP ESA: Restore

- ESA2: Restore from plantation or high density IAP
- ESA2: Restore from other land use
- ESA2: Restore where appropriate (CT)

BSP ESA

- ESA: Aquatic
- ESA: Terrestrial

BSP CBA: Degraded

- CBA2: Aquatic
- CBA2: Terrestrial

BSP CBA

- CBA: Terrestrial
- CBA: Terrestrial (CT)
- CBA: Forest
- CBA: River
- CBA: Estuary
- CBA: Wetland
- CBA: Aquatic (CT)

Scale: 1:11 000

Date created: October 30, 2018



Western Cape
Government

Agriculture

8 BUFFER ZONE DETERMINATION

The buffer zone requirements are indicated as distances from each side of the site's perimeter in Figure 8-1 and Table 8-1.

Based on the resulting low odour concentrations and the very low non-carcinogenic and carcinogenic risks, the buffer zone requirements for the Bonnievale WDF are expected to be contained by the site's boundaries. As such, the odour nuisance and health end points' buffer zone requirements were not required outside the site's boundaries.

However, considering that the Bonnievale WDF does not have any active or passive LFG extraction system, nor any lateral LFG migration monitoring probes, and taking into account the potential LFG migration risk, the minimum buffer requirement was set to 100 m from the site's boundaries (see Table 8-1).

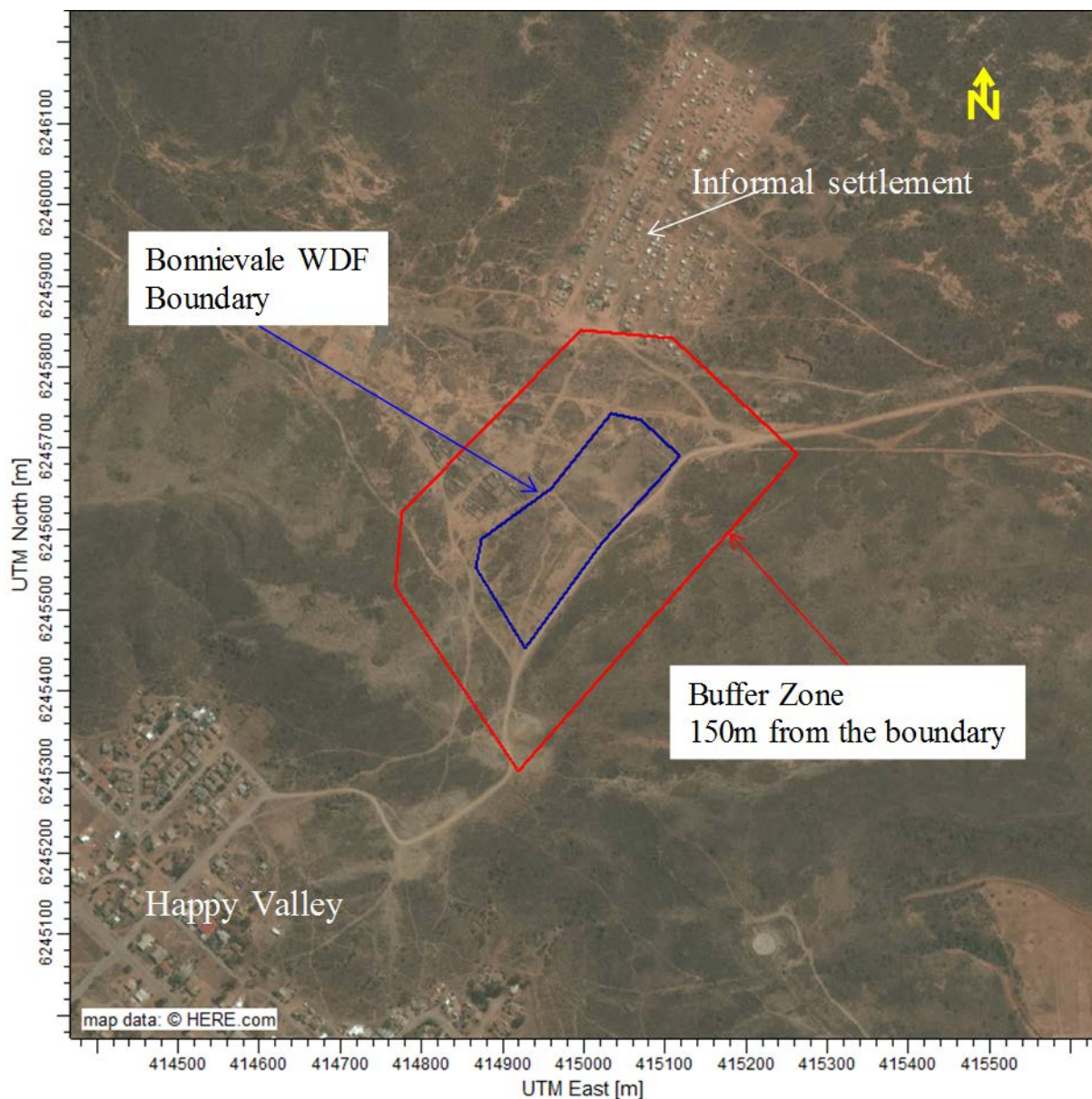


Figure 8-1. Buffer Zone Requirements for the Bonnievale WDF