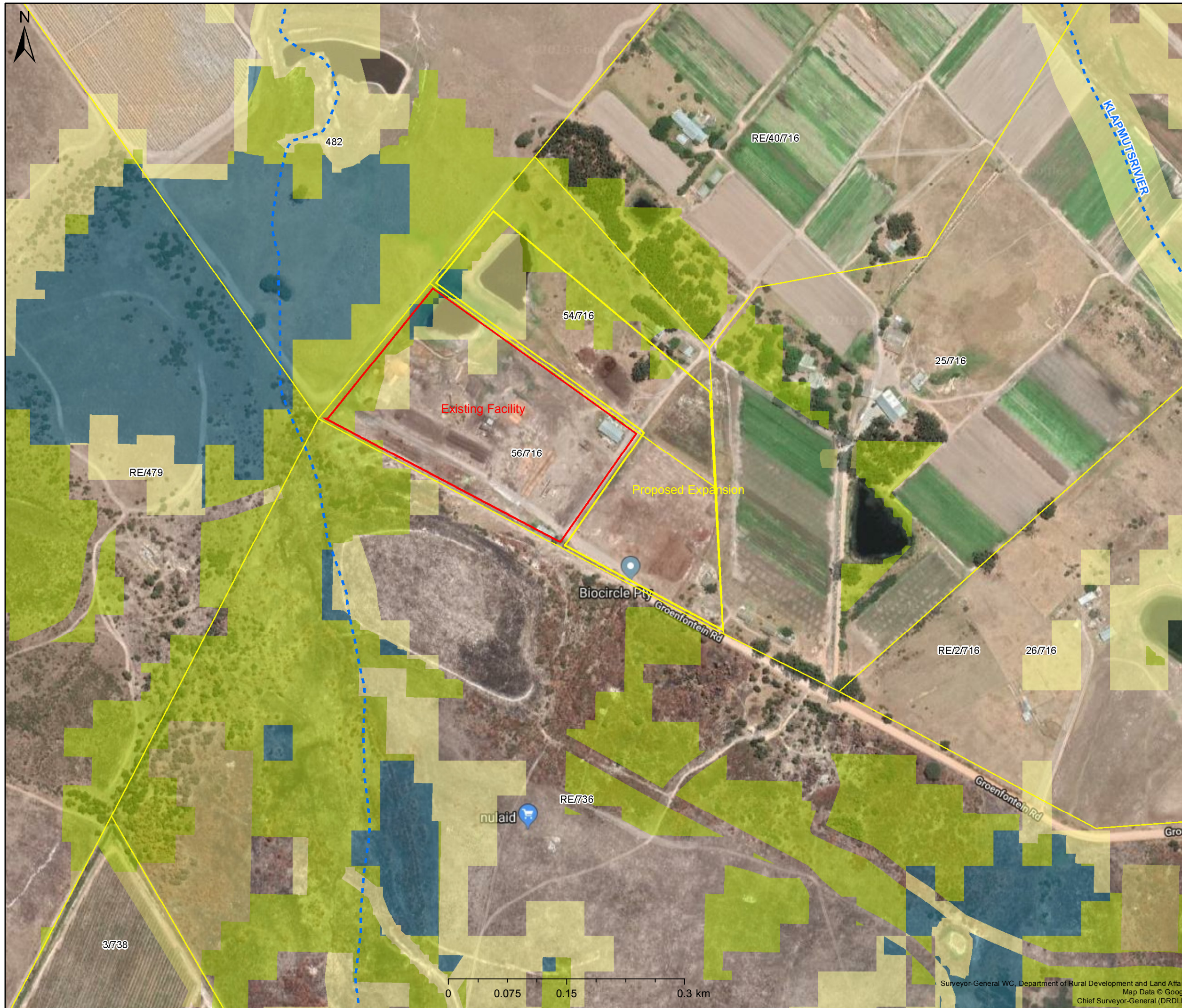


Biodiversity Map



Legend

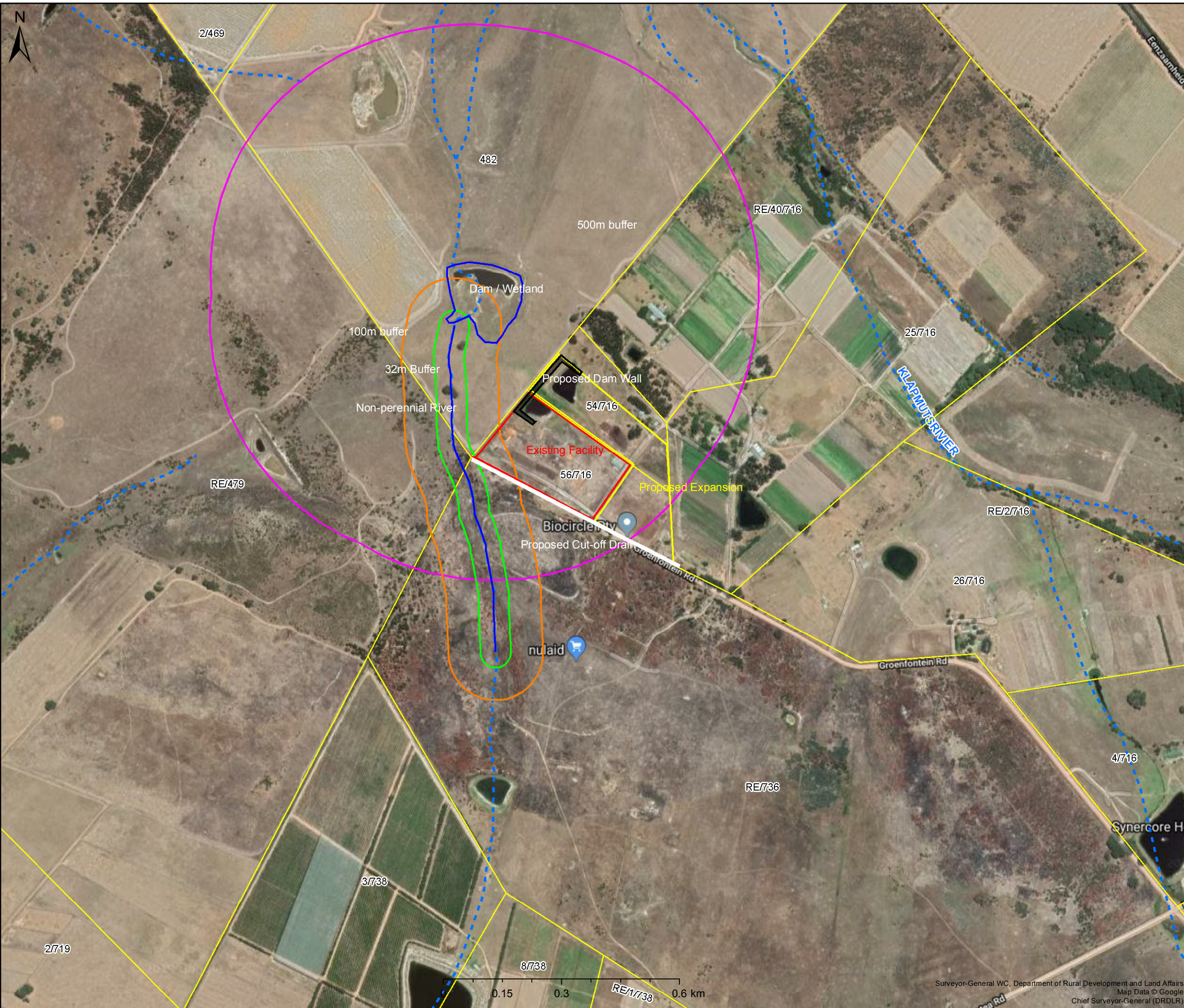
- Farm Portions
- Rivers**
- Perennial
- Non-Perennial
- Dry Water Course
- Rapids
- Waterfall
- BSP ESA: Restore**
- ESA2: Restore from plantation or high density IAP
- ESA2: Restore from other land use
- ESA2: Restore where appropriate (CT)
- BSP ESA**
- ESA: Aquatic
- ESA: Terrestrial
- BSP CBA: Degraded**
- CBA2: Aquatic
- CBA2: Terrestrial
- BSP CBA**
- CBA: Terrestrial
- CBA: Terrestrial (CT)
- CBA: Forest
- CBA: River
- CBA: Estuary
- CBA: Wetland
- CBA: Aquatic (CT)

Scale: 1:4 514

Date created: June 5, 2019



Watercourses Overlay



Legend

- Farm Portions
- Rivers
 - Perennial
 - Non-Perennial
 - Dry Water Course
 - Rapids
 - Waterfall

Scale: 1:9 028

Date created: June 5, 2019



Western Cape Government

Agriculture