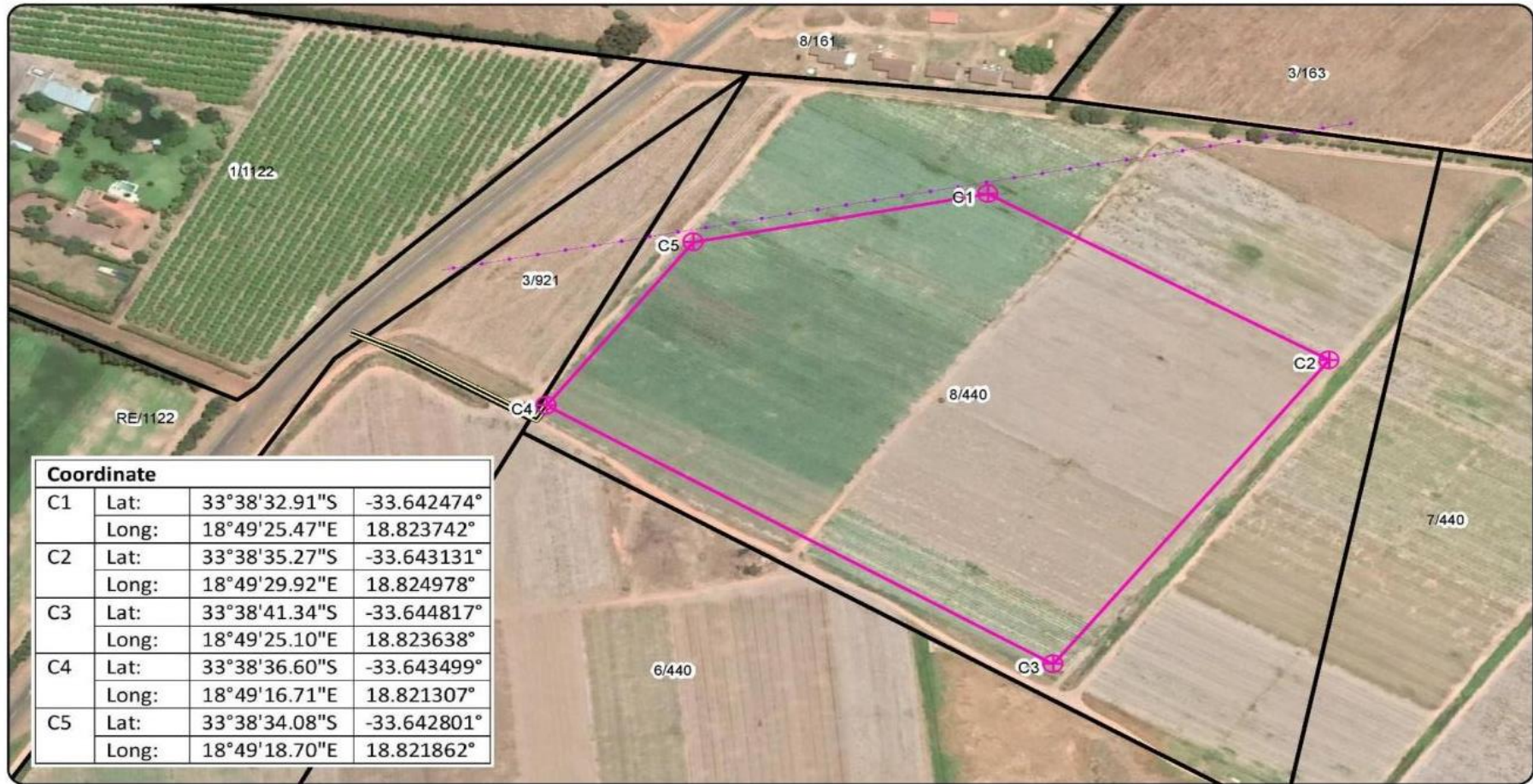


**APPENDIX B  
MINE LAYOUT PLAN**



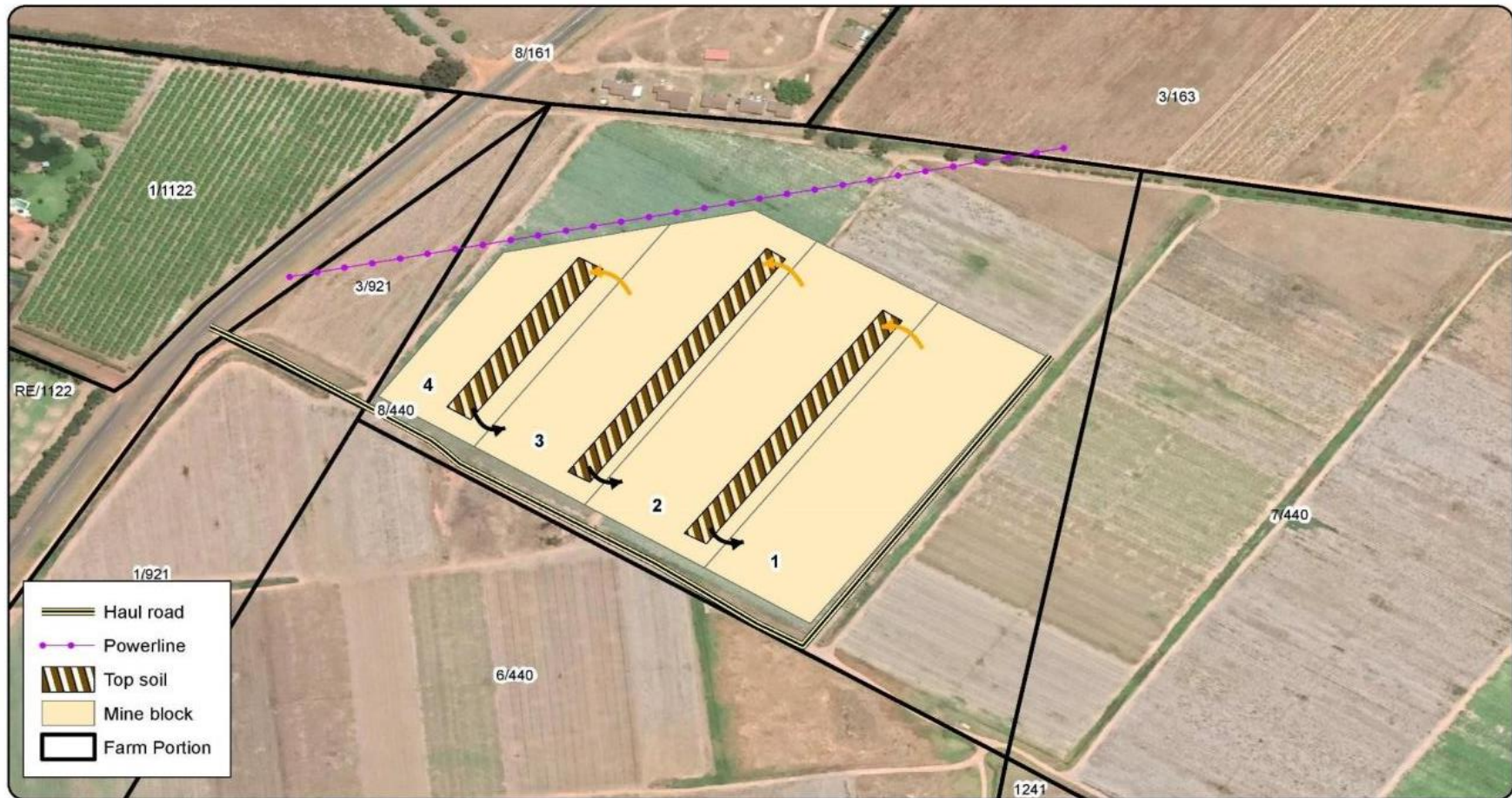
## MINE AREA (Regulation 2.(2) plan)

Portion 8 Vreyegunst no 440, Division Paarl



Date: 02/07/19

PO Box 557, Moorreesburg, 7310, Cell 0722026587, Fax 086 697 2069, planscape@telkomsa.net



## Preliminary mine plan

### Portion 8 of Vryegunst no 440, Division Paarl



Date: 02/07/19

PO Box 557, Moorreesburg, 7310, Cell 0722026587, Fax 086 697 2069, [planscape@telkomsa.net](mailto:planscape@telkomsa.net)