

Jessica

From: AJ de Wet [<mailto:aj@gasps.co.za>]
Sent: 05 July 2019 00:10
To: Eddie Wiggins
Cc: Derrick Nel
Subject: Standards for technical plant

Hi Gents

Please find attached the vessel details

Bulk tank specifications:

All pressure vessels and equipment: SANS 347 as referred in OHS Act 85 of 1993 " Pressure Equipment Regulation" PER.

DME tank specification : PD5500
DME piping specification : ASME 106A
DME Installation standard : SANS 10087 Part 1

CO2 Tank specification : EN13458
CO2 piping specification : EN 13480
High pressure piping specification: SANS 10260 (all parts)

Ethanol Tank specification : SANS 10131
Ethanol Tank installation : SANS 310

R152a storage vessels : 30lb cylinder, 926L cylinder, Steel ISO Tank.
R 152a piping specifications : 316 stainless steel

Electrical switchgear in Hazardous locations: ATEX , SANS 101080 (zone 1 & 2)
Electrical installation : SANS 10086
Standards pertaining to the plant layout: SANS 10087- 3 , SANS 310 and SANS 10089- 3
Gas detection : SANS 60079-29-3

Regards,



PEX-AL-PEX piping / CSST piping / Pre-paid meters / Bulk storage vessels / Gas detection / Gas fittings/ Gas Projects

Unit 5B, Five Star Junction, Corner Beyers Naude & Juice Street, Honeydew
P O Box 2705, Cresta, 2118
www.gasps.co.za

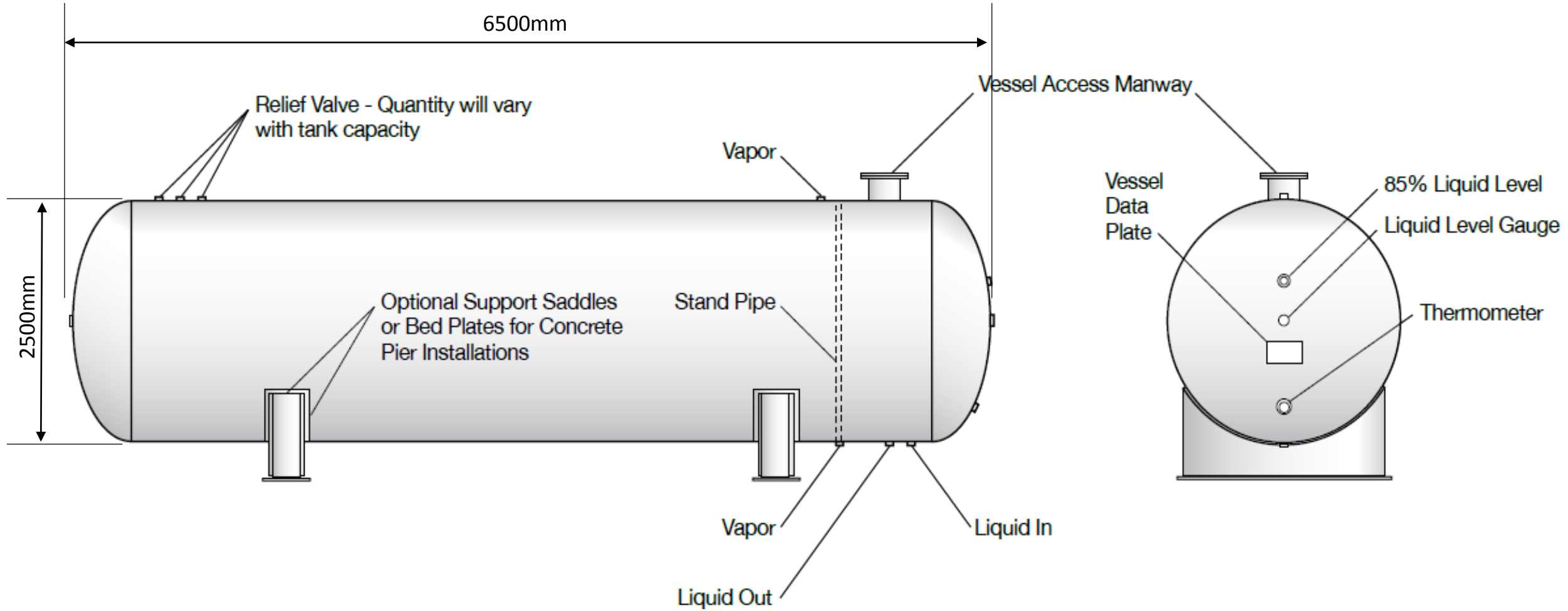
AJ De Wet
Director

Tel +27 11 795 1795
Fax +27 11 795 3888
Cell + 27 82 326 8682
E-mail aj@gasps.co.za

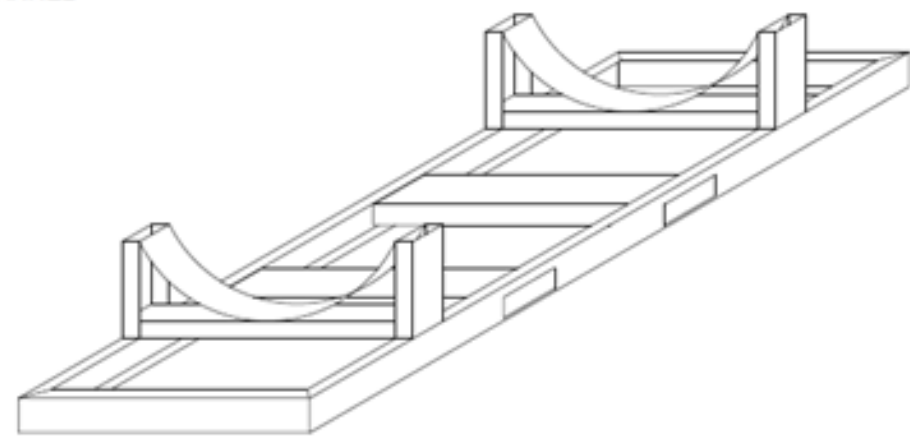
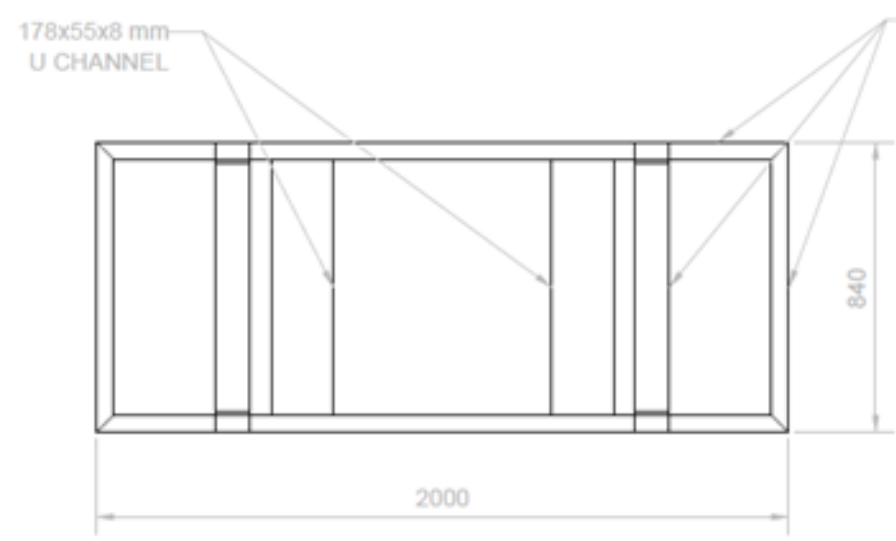
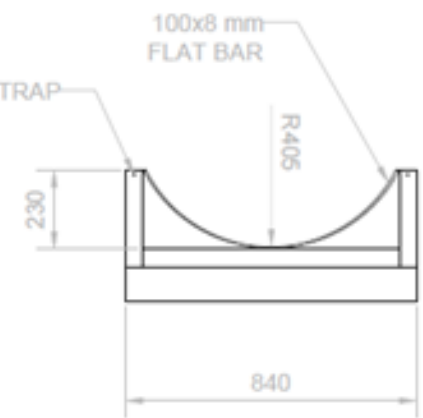
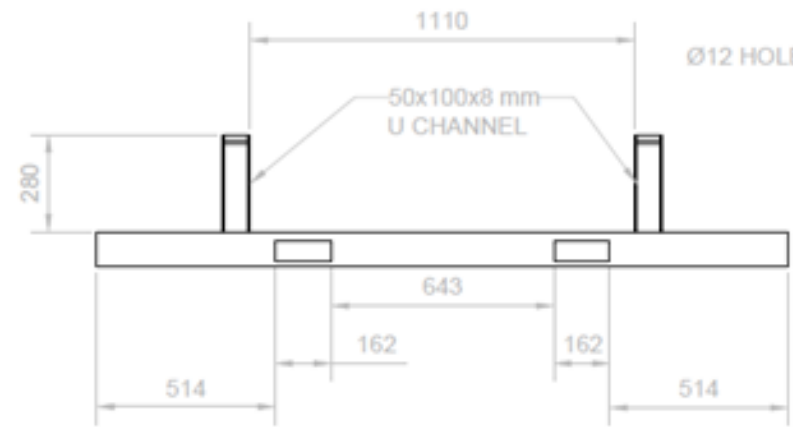
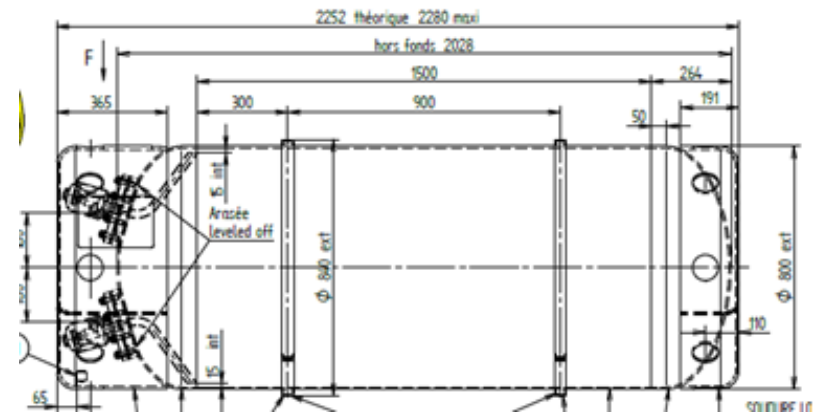
The information contained in this communication from GPS is confidential. It is intended solely for use by the recipient and others authorised to receive it. If you are not the intended recipient, you are hereby notified that any disclosure, copying, distribution or taking action in relation of the contents of this information is strictly prohibited and may be unlawful. GPS does not warrant the integrity of the information transmitted, nor that it has not been corrupted nor previously intercepted and/or tampered with.

DME 45m3 Storage Vessel

Aboveground

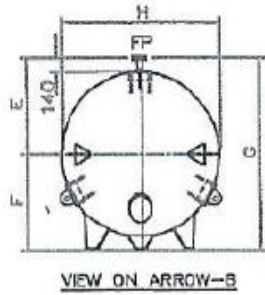
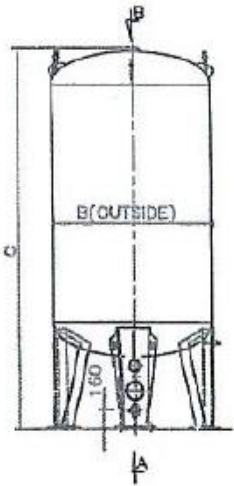


R152a 926 litre Storage Vessel



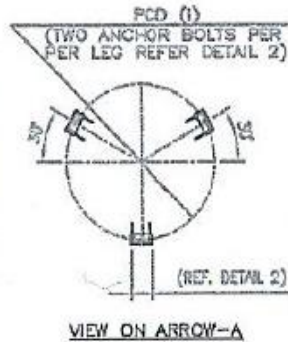
NOTE: TO BE HOT DIP GALVANIZED AFTER MANUFACTURING

CO2 . 15 tonne Storage Vessel

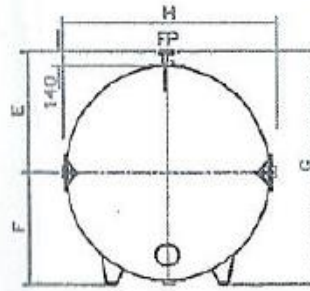
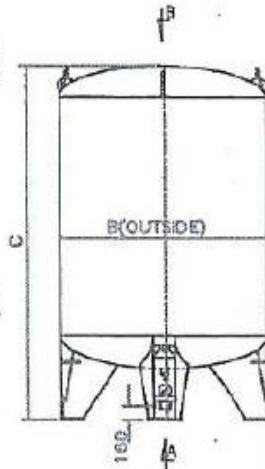


VIEW ON ARROW-B

CNS 3M - CNS11M VERTICAL VESSEL
(VESSEL WITH THREE SUPPORT LEGS)

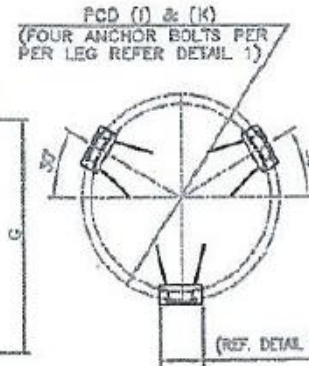


VIEW ON ARROW-A

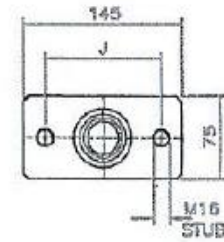


VIEW ON ARROW-B

CNS 18M AND 26M VERTICAL VESSEL
(VESSEL WITH THREE SUPPORT LEGS)

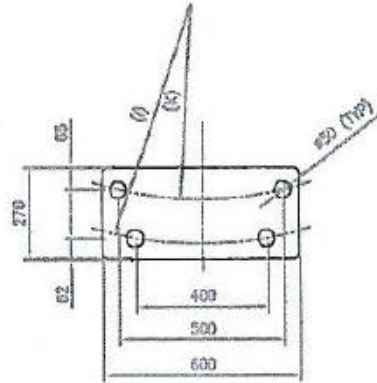


VIEW ON ARROW-A



38 mm (1 1/2")
FILL POINT FLANGE

APPLICATION	J
CARBON DIOXIDE	85.7
NITROUS OXIDE	130.2



DETAIL 1



DETAIL 2

N = TOTAL NUMBER OF ANCHOR BOLTS

MODEL	DIMENSIONS IN mm								N
	B	C	E	F	G	H	I	K	
CNS 3M	1510	5018	810	952	1782	1510	1586	N/A	6
CNS 6M	1810	5318	1095	1152	2247	1910	1801	N/A	6
CNS 11M	1910	7718	1095	1152	2247	1910	1801	N/A	6
CNS 18M	2492	8500	1386	1443	2829	2492	2405	2145	12
CNS 26M	2492	10400	1386	1443	2829	2492	2405	2145	12

SPEC. MODEL	CAPACITY IN LIT		WEIGHT EMPTY (Kg.)	WEIGHT FULL CO2 (Kg.)
	GROSS	NET		
CNS 3M	3,149	2,834	2,700	5,563
CNS 6M	5,991	5,392	3,000	9,346
CNS 11M	10,862	10,319	6,300	16,723
CNS 18M	18,210	17,300	9,800	27,273
CNS 26M	26,064	24,761	12,500	37,508

ANNULUS LINES	
DESCRIPTION	SIZE
LIQUID SUPPLY TO P.R. VAPORISER	20NB SCH10
LIQUID FEED LINE	40NB SCH10
BOTTOM FILL	40NB SCH10
LEVEL GAUGE LIQUID LINE	15NB SCH10
LEVEL & PRESS. GAUGE GAS LINE	15NB SCH10
TRY-COCK	15NB SCH10
TOP FILL	40NB SCH10
GAS RETURN FROM P.R. VAPORISER	25NB SCH10
SAFETY LINE	25NB SCH10

NOTE:

1. ALL VESSELS ARE EQUIPPED WITH PRESSURE RAISING CIRCUIT MOUNTED BELOW BOTTOM DOME

9000 litre Ethanol Storage Tank

