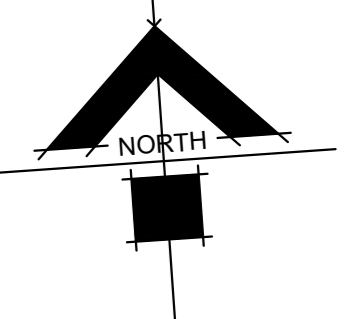
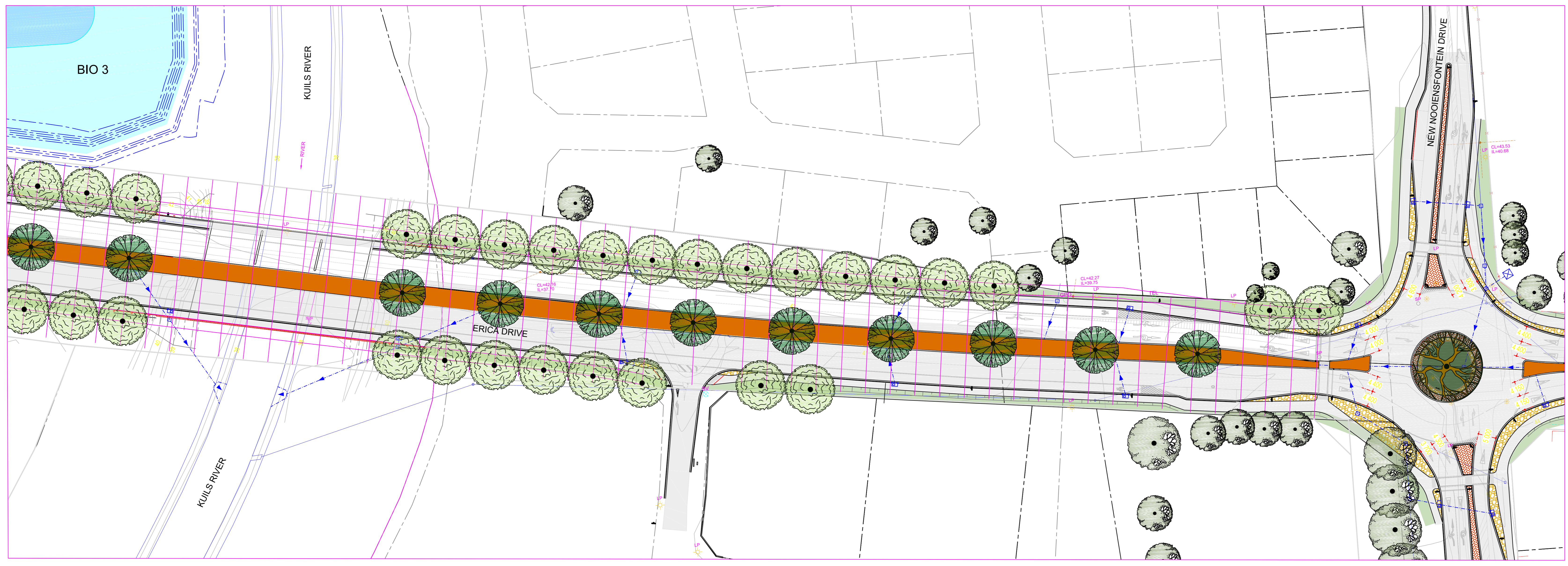


- TREES**
- 1 No. *Erythrina caffra / lysistemom* (2000 Litre bag size)
 - 19 No. *Syzygium guineense* (500 Litre bag size)
 - 55 No. *Vachellia karroo* (500 Litre bag size)
 - Existing trees
 - Trees to be removed
- GROUNDCOVERS**
- 3 200m² *Cynodon sp.* seeding
 - 150m² *Carpobrotus sp.* & *Osteospermum sp.* mix
- HARD LANDSCAPING**
- 3 350m² Compacted laterite
 - Paving to Engineer's specifications

BIO 3
New bio-retention pond as per SAS report. Refer to drawing CC1473-101 for details and landscaping specification.

Bio-Retention Pond north east of Erica Drive / Eland Street intersection
The pond has a capacity of 5000m³. The catchment area west of the R300 and a smaller catchment area between the R300 and Eland Street discharge towards this Pond through a pipe system. The pond will mostly be dry although allowance for permanent water has been made. The Bio-Retention Pond consists of the following:

- 900Ø Inlet
- Sediment Forebay / Litter Trap with a maintenance ramp
- 750Ø Outlet towards Kulls River
- 5m wide Armorflex pond overflow structure
- Appropriate obligate and facultative indigenous vegetation as per the Guidelines in The Sustainable Urban Drainage System



NO.	DATE	REVISION

DESIGNED:	NAME:	SIGNED:	DATE:
R. SPOLANDER			
DRAWN:	R. SPOLANDER		
CHECKED:	R. SPOLANDER		

PROJECT:
3785.4 CITY OF CAPE TOWN EASTERN REGION

ERICAS DRIVE ACROSS THE R300 BETWEEN BELHAR DR AND HIGHBURY RD
M71 ERICA DRIVE
LANDSCAPE SKETCH PLAN 3