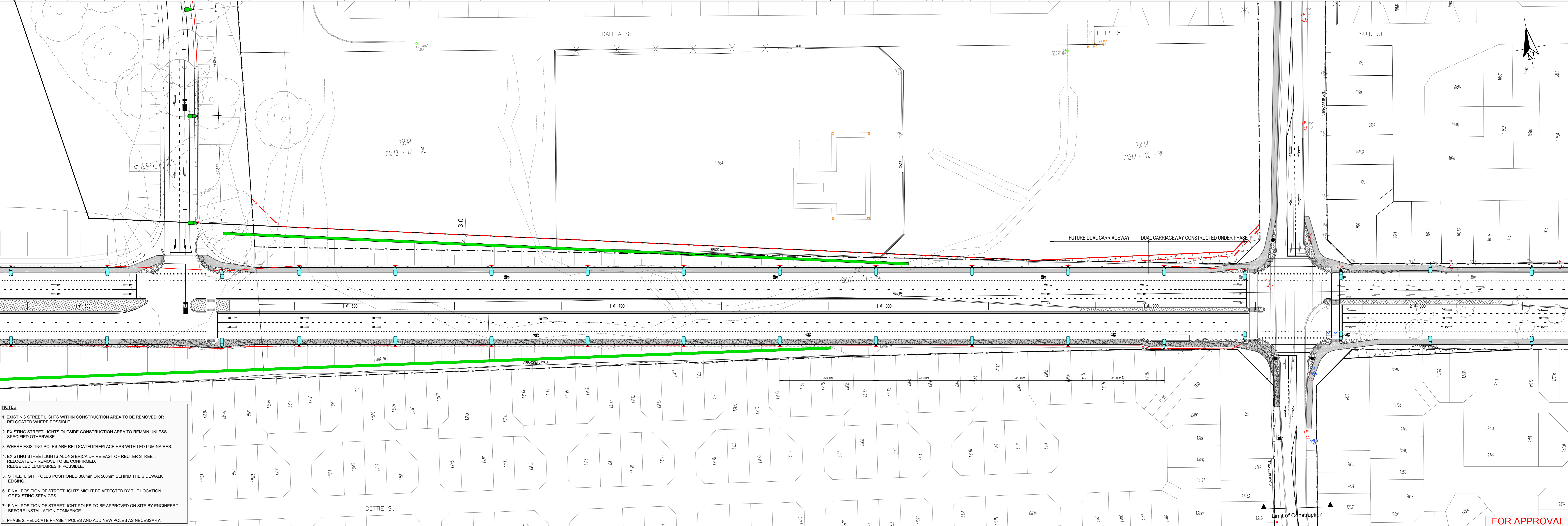
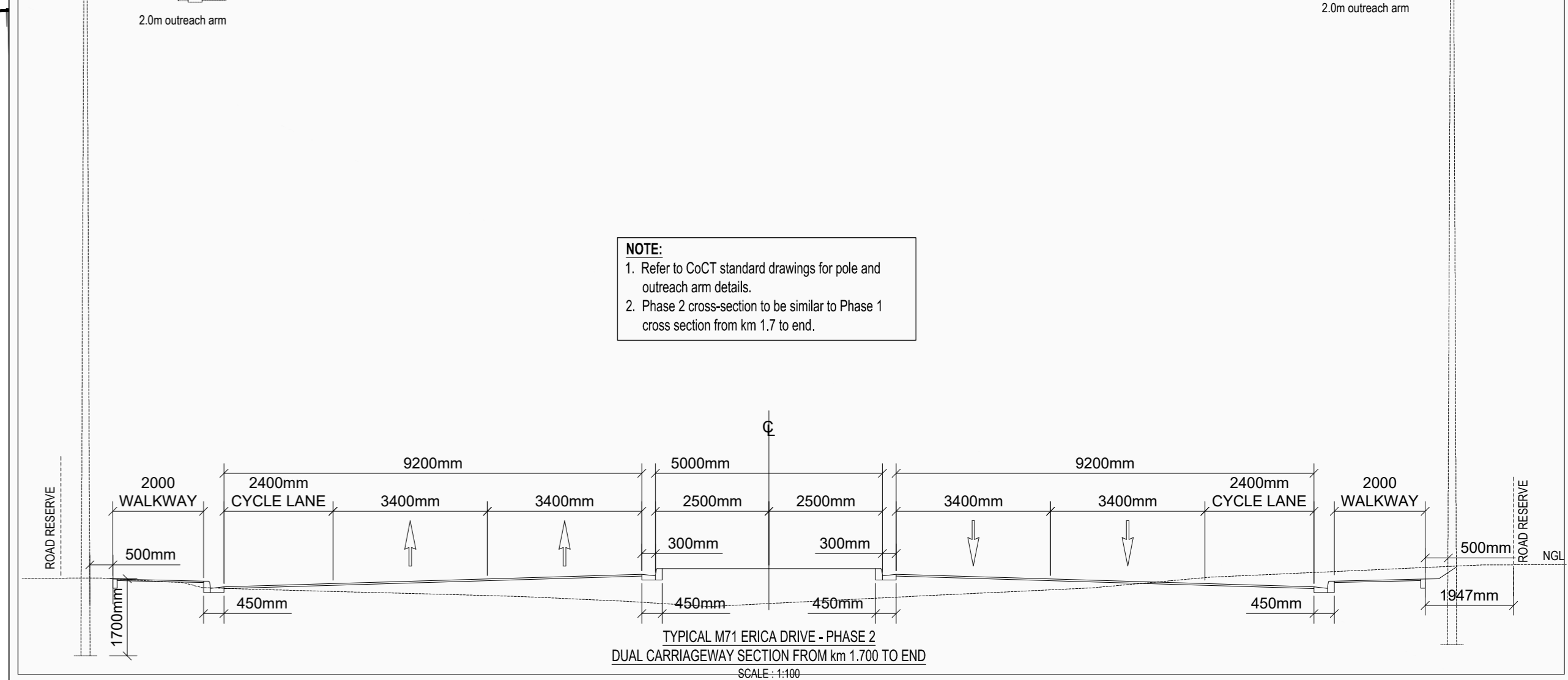


LEGEND:		
SYMBOL	LUMINAIRE NUMBER	DESCRIPTION
	L1	13.5m 11.8m M-H POLE WITH 1 x 64 LED / 144W BEKA LED LUMI M/D LUMINAIRE 5118 OPTICS 17010 LUMENS
	L10	13.5m 11.8m M-H POLE INCLUDING 2m OUTREACH ARM WITH 1 x 64 LED / 144W BEKA LED LUMI M/D LUMINAIRE 5118 OPTICS 17010 LUMENS
	L2	11.0m 9.3m M-H POLE WITH 1 x 48 LED / 108W BEKA LED LUMI M/D LUMINAIRE 5068 OPTIC 33133 LUMENS
	L3	13.5m 11.8m M-H POLE WITH 1 x 96 LED / 211W BEKA LED LUMI M-H LUMINAIRE 5117 OPTICS 26 958 LUMENS
		RELOCATED LIGHT POLE
		EXISTING LIGHT POLE
		ASPHALT SIDEWALK
		STONE PITCHING
		CONCRETE
		BLOCK PAVING
		NEW ROAD RESERVE
		EXISTING ROAD RESERVE
		CABLE - STREET LIGHTING
		- 25mm ² ALUMINUM ELECTRICAL CABLES UNLESS OTHERWISE SPECIFIED



- NOTES:
- EXISTING STREET LIGHTS WITHIN CONSTRUCTION AREA TO BE REMOVED OR RELOCATED WHERE POSSIBLE.
 - EXISTING STREET LIGHTS OUTSIDE CONSTRUCTION AREA TO REMAIN UNLESS SPECIFIED OTHERWISE.
 - WHERE EXISTING POLES ARE RELOCATED: REPLACE HPS WITH LED LUMINAIRES.
 - EXISTING STREETLIGHTS ALONG ERICA DRIVE EAST OF REUTER STREET: RELOCATE OR REMOVE TO BE CONFIRMED. REUSE LED LUMINAIRES IF POSSIBLE.
 - STREETLIGHT POLES POSITIONED 300mm OR 500mm BEHIND THE SIDEWALK EDGING.
 - FINAL POSITION OF STREETLIGHTS MIGHT BE AFFECTED BY THE LOCATION OF EXISTING SERVICES.
 - FINAL POSITION OF STREETLIGHT POLES TO BE APPROVED ON SITE BY ENGINEER BEFORE INSTALLATION COMMENCE.
 - PHASE 2: RELOCATE PHASE 1 POLES AND ADD NEW POLES AS NECESSARY.

its INNOVATIVE TRANSPORT SOLUTIONS
 26 De Havilland Crescent
 P.O. Box 1000, Building 1
 Pinesur Technopark
 Pretoria 0020
 Tel: 012 349 1664
 gauteng@itsglobal.co.za
 www.itsglobal.co.za

CLIENT:	APPROVED - AS BUILT	APPROVED - CONSTRUCTION
Name: _____	Name: _____	Name: _____
Prof. Reg. No.: _____	Prof. Reg. No.: _____	Prof. Reg. No.: _____
Date: _____	Date: _____	Date: _____

NO.	DATE	REVISION	SIGNED
A	28.08.18	ISSUED FOR APPROVAL	

DESIGNED:	W. LOUW	DATE:	
DRAWN:	J.D.		
CHECKED:	W. LOUW		

3785.4 CITY OF CAPE TOWN EASTERN REGION
 M71 ERICA DRIVE - FINAL
 STREETLIGHT PLAN km 1.000 TO km 2.000

FOR APPROVAL

SCALE: 1:500 @ A0
 REV: A
 DATE: 2018/08/28
 DRAWING NUMBER: 3785.4 / SL / 06

COPIEREK VOORBEHOU / COPYRIGHT RESERVED

G:3785.4 CoCT Eastern Region Erica Drive 11 Drawing : Figures CAD Street Lights 3785.4_CoCT Erica_Dr_Phelm_SLights_Final Phase Interchange JD_2018-08-24.dwg